



BackBox[®] E4.13 Upgrade Procedure

Abstract

This Upgrade Procedure document is for BackBox[®] E4.13

Published: July 2024



Legal Notice

© Copyright 2013, 2024 ETI-NET Inc. All rights reserved.

Confidential computer software. Valid license from ETI-NET Inc. required for possession, use or copying.

The information contained herein is subject to change without notice. The only warranties for ETI-NET- products and services are set forth in the express warranty statements accompanying such products and services. Nothing herein should be construed as constituting an additional warranty. ETI-NET shall not be liable for technical or editorial errors or omissions contained herein.

BackBox is registered trademark of ETI-NET Inc.

StoreOnce is a registered trademark of Hewlett Packard Development, L.P.

Microsoft, Windows, and Windows NT are U.S. registered trademarks of Microsoft Corporation. Tivoli Storage Manager (TSM) is a registered trademark of IBM Corporation.

QTOS is a registered trademark of Quality Software Associates Inc.

All other brand or product names, trademarks or registered trademarks are acknowledged as the property of their respective owners.

This document, as well as the software described in it, is furnished under a License Agreement or Non- Disclosure Agreement. The software may be used or copied only in accordance with the terms of said Agreement. Use of this manual constitutes acceptance of the terms of the Agreement. No part of this manual may be reproduced, stored in a retrieval system, or transmitted in any form or by any means, electronic or mechanical, including photocopying, recording, and translation to another programming language, for any purpose without the written permission of ETI-NET Inc.

Copyright © 2013, 2024 ETI-NET Inc. All rights reserved.

Table of Contents

INTRODUCTION	4
BackBox Upgrade Package	4
Product Naming and Version Identification	4
Compatibility and Components	4
GENERAL CONSTRAINTS AND COMPATIBILITY	6
NONSTOP UPGRADE	7
BackBox Processes	7
Domain Upgrade	7
Post-Upgrade	8
PERIPHERAL NODES UPGRADE	10
Cleaning a Sub-Volume for a Peripheral Node	12
VTC UPGRADE	13
Requirements	13
Uninstall the Old BackBox Software	14
Install the New VTC Software	14
USER INTERFACE UPGRADE	15
Install User Interface	15
POST-UPGRADE	16
APPENDIX	17
A. ATTO Celerity Installation/Upgrade	17
Install the FC Adapter Driver	17
Install the FC Configuration Tool	17
Validate FC Card Channel Parameters	20
Update FC Adapter Flash Version	22
B. Moving the Sub-Volume	23
C. Moving an EMS Extractor Sub-Volume	25
D. Upgrade Execution Sample	25
E. Installation Macro Sample	29
F. Upgrade Installation Macro Values	33
G. Backup Sub-Volume	34

INTRODUCTION

This document describes the upgrade procedure of a BackBox E4.13

If no changes are required in the virtual tapes configuration, the update can be done entirely by the BackBox administrator with very little disruption.

In case of any change in the configuration or emulation parameters of virtual tape drives, the product support should be contacted.

PLEASE READ THIS DOCUMENT BEFORE PERFORMING THE UPDATE


The introduction presents an overview of version identification and compatibility. The [NonStop Upgrade](#) presents the upgrade activities in the sequence they must be accomplished in order to upgrade the domain. The next section documents the procedure to be run for the [Peripheral Nodes Upgrade](#). The chapters [VTC Upgrade](#) and [User Interface Upgrade](#) document the steps to be performed in order to update the Virtual Tape Controller and the User Interface. The [Post-Upgrade](#) section describes the services that have to be restarted after the upgrade and the tests to be run in order to verify if the installation has been correctly done. The [Appendix](#) describes the drivers required for the upgrade, the installation macro samples, and the legacy SSL Protocols.

The upgrade consists of updating (in this specific order) the domain and its peripheral node(s), the VTC, and the User Interface.

Prior to proceeding with the upgrade:

1. get the BackBox package for the new version (see the table below with the components);
2. stop all the running BackBox processes;
3. upload the NSK package to the NSK (INSE4.13 as a text file and BBE4.13 as a binary file).

BackBox Upgrade Package

Upgrade Components	Files	Version xxx
NSK Package	binary file BBE _{xx} .xx macro text file INSE _{xx} .xx	E4.13
 Upload the binary file (ex: BBE) and the macro text file INSE in a sub-volume different from the current BackBox sub-volume.		
User Interface Package	Ex.xx.nnn	E4.13
VTC Application	Ex.xx.nnn	E4.13

Product Naming and Version Identification

A package is identified by its release number. There are several release dates per version; each contains all the fixes, improvements, and changes made to its release date. All releases of the same version are functionally equivalent and are forward and backward compatible.

On the NonStop VPROC BBSV program gives the version type and number:

```
$DATA15 .REGE412.BBSV
  Binder timestamp: 29MAY2024 15:09:48 LCT, 29MAY2024 19:09:48 GMT
  Version procedure: T9999V04_01JUN2024_BBOXETI_13
  Version procedure: T8432H04_30APR2012_CCPLMAIN
  TNS/E Native Mode: runnable file
$DATA15 REGE412 23>
```

Compatibility and Components

All BackBox software on NSK nodes of a single domain must be of the same version. To have an operational BackBox application, the following components are required:

- BackBox NSK component (latest available version)

- User Interface (UI) current version
- VTC current version



Different versions of the NSK software can be installed on the same NSK node, but for different domains and for different VTCs.

Notes on data compatibility:

- Backups written by any older version can be restored by any V4.xx version.
- Backups written by any V4.xx version cannot be restored by versions older than V4.00.
- Backups written by V4.02 and up using the light compression, cannot be restored by V4.00.
- The Install macro handles the conversion of the BackBox data files, if required.
- The VTC internal configuration files from versions older than V4.00 have not been converted. VTC internal configurations must be reapplied using configuration tool.

Notes on VTC Server OS compatibility:

- OS prior Windows Server 2008 R2 cannot be migrated to any V4.xx
- ATTO FC-16 fully supported from V4.07 and higher
- VTC Server using Server 2012 R2 needs to install the following Microsoft Framework to migrate to V4.12 and higher.



Download and use the Windows Management Framework 4.6.2 before starting the migration. The package can be downloaded from Microsoft Download Center .

GENERAL CONSTRAINTS AND COMPATIBILITY

- Backups written by any old version can be restored by a newer version (but not the reverse because the format of virtual volumes that changed with the version).
- All components of a domain, NSK and Windows software, must be at the same version level and type; therefore, they have to be upgraded at the same time.
- Different versions of the NSK software can be installed on the same NSK node, but for different BackBox domains and for different VTCs.

Multiple BackBox Domain Configurations

- In shared NSK, each domain runs its own EMS Extractor(s)
- In shared VTC, all domains must be included in the Domain List page displayed by the UI Client started on this VTC.



A single version of the software can be installed on a VTC Windows server. The installation has to be managed when a VTC is shared by several domains. Disable the VTC in the domains that are not at the same level as the VTC.

On a site with several VTCs, consider withdrawing a VTC from regular use for testing a new major version in a distinct domain. This can be done without losing the configuration, by disabling the VTC in the production domain.

On a complex configuration, especially when each VTC is connected to several NSK nodes, it might be useful to have a printed copy of the overall tape drives configuration before having made the changes required for the upgrade.



If you use iSCSI (virtual tape devices) and upgrade to E4.13, the upgrade will not change your configuration, yet it will modify the way VTC MC handles the virtual tape devices.

NONSTOP UPGRADE

BackBox Processes

Follow the procedures described below to make sure that the processes are stopped:

1. Exit any BackBox User Interface

Exit and stop any BackBox User Interface that can maintain/restart an IP session with the Domain manager (such as restarting new executions of the program BBSV). Some UI pages can automatically generate requests to the domain manager that would prevent the proper re-installation of the new domain program. For the following operations use a Guardian user ID in the SUPER group.

2. Stop the Tape Applications, Disable TMF Audit Dump

Stop/freeze tape activity, disabling the TMF audit dumping, holding the backup/restore jobs.

3. Stop the EMS Extractor

Verify OBB017 is not running in batch.

Depending on whether the EMS Extractor was started by an OBEY file or as a permanent process in the in SCF. STOP \$BBEXT or SCF ABORT PROCESS \$ZZKRN.#BBOXEXT.

Stop the EMS Extractors on all NonStop systems included in the domain that is about to be upgraded - if not already done. Distinct BackBox domains can continue to operate on tape drives emulated by VTCs that are not in the domain to be upgraded.

If a mount request is issued while the EMS Extractor is stopped and the upgrade is executed, this pending mount request will be the first to be executed when the EMS Extractor is restarted (after the upgrade).

4. Stop all Tape Drives in SCF

Go to the SCF.

Then stop the tape IOPs:

```
1->RESET TAPE <$tapedevice-name-pattern>, FORCE
```

5. Check EMS messages


Have an additional TACL session opened to display EMS messages using VIEWPT or any other EMS viewer. Run the OEMS2 to view only the messages related to the tape system and to BackBox.


Note that the conversion program may issue EMS messages.

Domain Upgrade

When running the update, the INSE413 installer macro performs the following tasks:

- Copies the complete sub-volume to a backup sub-volume
- Updates the programs and the standard OBEY files
- Converts the data file according to the detected current version.

	The upgrade macro INSE413 will require to enter the name of the sub-volume that has to be used as a back-up for the current installation. This specific sub-volume is mandatory and it will be used in case a downgrade is required. See section Backup Sub-Volume in the Appendix .
-------------------------------------------------------------------------------------	----------------------------------------------------------------------------------------------------------------------------------------------------------------------------------------------------------------------------------------------------------------------------------------------------------------------

	Use an ID in the SUPER group, but not SUPER.SUPER. This user ID will own all installed files. Because BBSV and BBEXT will be PROGID by the macro, all non-interactive processes that have not logged-in will run under this user ID.
-------------------------------------------------------------------------------------	--------------------------------------------------------------------------------------------------------------------------------------------------------------------------------------------------------------------------------------

Run the macro shown below to start the upgrade:

Go to the location of the sub-volume where the upgrade package has been uploaded (INS E413 and BBE413, then

```
> $DATA15 BDR412 22> run INSE413
Searching for latest PAK file $*.*.BBE413*
press Break key to stop ...
... found $DATA15.BPAKTMPH.BBE413 (2024-FEB-16 11:52)
... found $DATA15.BPAKTMPH.BBE413A (2024-JAN-23 16:17)

----- Installation of BackBox E4.13 NSK components -----

1. Input PAK file ..... : $DATA15.BPAKTMPH.BBE413 (FEB-16 11:52)
2. Target subvol ..... : $DATA15.BDR412
```

- 3. Install All or Peripheral node: All
- 4. Initial installation or Update: Program update
- 5. Spooler location : \$S.#BBOX
- 6. TCP/IP process name : \$ZTC2
- 31. EMS Extractor (BBEXT) process : \$BBEXT

(Number) option to modify, (I) to install, or (Q) to quit : **31**

EMS Extractor (BBEXT) process name (\$BBEXT) : **\$bbldr**

- ```
----- Installation of BackBox E4.13 NSK components -----
1. Input PAK file : $DATA15.BPAKTMPH.BBE413 (FEB-16 11:52)
2. Target subvol : $DATA15.BDR412
3. Install All or Peripheral node: All
4. Initial installation or Update: Program update
5. Spooler location : $S.#BBOX
6. TCP/IP process name : $ZTC2
31. EMS Extractor (BBEXT) process : $BBBDR
```

(Number) option to modify, (I) to install, or (Q) to quit : **i**

For an installation execution sample, see the example in the [Appendix](#).

The available options for the installation macro INSE413 are:

- 1. Input PAK file: Location of the distribution PAK file.

If the name of the PAK file to install was not found and it is not displayed, enter it. The file name can be qualified up to a remote node name.

- 2. Target Subvol: Installation sub-volume. Default value is the current sub-volume.

- 1. Install All or Peripheral Node: Type of installation.

A (All) to install all programs on the NonStop node that will host the BackBox Domain Manager.

P (Peripheral node) to install only the node specific components, such as the EMS Extractor. Select **A**


- 4. Initial Installation or Update

I to execute initial installation, including the preparation of Domain sample files.

U to update only programs, distributed TAACL macro and EMS filter files.

This value is automatically prompted by the macro, depending on the presence of BackBox configuration files in the target sub-volume.


Select **U**

 Change the target sub-vol (Option 1) until the Update option is set by the installation macro.


5. Spooler Location: \$S.#BBOX  
To customize the OBEY files.

6. TCP/IP Process Name: \$ZTC0  
To customize the OBEY files.

31. EMS Extractor (BBEXT) Process: \$BBEXT  
To customize the OEXT and SCFIN1 files.

 \$BBEXT is the EMS Extractor process default name. This process can be renamed by the user, but the name has to be the same as the one used in the previous version.

For more info the installation macro values, see the [Appendix](#).

 Check the message displayed after line 42: `Running BackBox process(es)`. If there is any running process, make sure to press **S** to stop the(se) process(es) and proceed with the upgrade.

## Post-Upgrade

After the upgrade is complete perform the following procedure:

Verify/Update **BBSETUP**



In the domain installation sub-volume, BBSETUP contains the TACL variables for the execution of the macros defined in MACROS.



If you upgrade from version 4.09 and want to keep your current User Management configuration, uncheck the Run interactive processes under the NonStop user ID box on the Configuration Domain page. SUPER.SUPER user may be required to update the configuration.

# PERIPHERAL NODES UPGRADE



Since version 4.09 each peripheral node is controlled and managed by its own peripheral node license. Licenses are available upon request. Contact [ETI-NET Support](#) for peripheral node license request. The license file received has to be uploaded on the NonStop in binary mode. See license file content \ETINIUM.\$DATA05.BPAK.BBEXTLIC in the sample below.

Software on peripheral nodes running only the EMS Extractor must be updated by using the same installation macro and PAK files that the one used to update the Domain manager. The macro will ask for the location of the central domain sub-volume before displaying the active values for all options

1. Run the Obey file to start the extractor by specifying where the peripheral node license is located (see the sample below).
1. Modify the indicated line in the sample to point at the location of the peripheral node license.

If there is no peripheral node license, the specified line will be ignored by the extractor.

Sample:

```
$DATA15 BBE413175> fup copy oext
COMMENT ***** COMMENT start
manually the EMS extractor process
COMMENT ***** CLEAR ALL
RESET DEFINE *
DELETE DEFINE =BackBox_BBSETUP
ADD DEFINE =BackBox_BBSETUP, CLASS MAP, FILE
\ETINIUM.$DATA05.BPAK.BBSETUPDELETE DEFINE =TCPIP^PROCESS^NAME
ADD DEFINE =TCPIP^PROCESS^NAME, CLASS MAP, FILE $ZTCODELETE DEFINE
=BBEXT_LICENSE
ADD DEFINE =BBEXT_LICENSE, CLASS MAP, FILE \ETINIUM.$DATA05.BPAK.BBEXTLIC
RUN $DATA05.BPAK.BBEXT /NOWAIT, TERM $ZHOME, name $BBEXT/
```



The process names are not taken in the exiting setup and the default values should be revised for re-customization. Enter a number to change the corresponding option until you are satisfied with the displayed values. Then enter the letter "I" to continue installation and extract the appropriate files to the target sub-volume.

Run the following macro to start the upgrade of the NSK components:

```
$ETINET YINE413P 20> run INSE413
Searching for latest PAK file $*.*.BBE413*
press Break key to stop ...
```

----- Installation of BackBox E4.13 NSK components -----

1. Input PAK file ..... : \$ETINET.YINGQC.BBE41PAK (MAY-6 20:7)
2. Target subvol ..... : \$ETINET.YINE413P
3. Install All or Peripheral node: All
4. Initial installation or Update: Initial
5. Spooler location ..... : \$\$.#BBOX
6. TCPIP process name ..... : \$ZTC0
31. EMS Extractor (BBEXT) process : \$BBEXT
33. Domain manager TCPIP address. : 127.0.0.1
34. Domain manager TCPIP port.... : 4561

(Number) option to modify, (I) to install, or (Q) to quit :3

What to install (A-All / P-Peripheral node EMS Extractor):P

----- Installation of BackBox E4.13 NSK components -----

- ```
Domain subvol \node.$vol.subvol () :\ETINIUM.$DATA15.YINE413
```
1. Input PAK file : \$ETINET.YINGQC.BBE41PAK (MAY-6 20:7)
 2. Target subvol : \$ETINET.YINE413P
 3. Install All or Peripheral node: Peripheral node only (EMS Ext)
 4. Initial installation or Update: Initial
 5. Spooler location : \$\$.#BBOX
 6. TCPIP process name : \$ZTC0

31. EMS Extractor (BBEXT) process : \$BBEXT
32. Domain subvol : \ETINIUM.\$DATA15.YINE413

(Number) option to modify, (I) to install, or (Q) to quit :I

Confirm to proceed (Y/N) : Y

UNPAK /NAME/ \$ETINET.YINGQC.BBE41PAK, (\$*.BBE413X.BBEXT, \$*.BBE413X
.BBLIB, \$*.BBE413X.SSL, \$*.BBE413X.CRYPTO, \$*.*.OEXT,
\$*.*.SCFIN1, \$*.*.OBWIN1, \$*.*.ORWIN1,
\$*.*.EMSFILT1, \$*.*.EMSFILT2, \$*.*.EMSFUPIN, \$*.*.OEMS*), VOL \$ETINE
T.YINE413P, MYID,OPEN,LISTALL, AUDITED
UNPAK - File decompression program - T1255L01 - (2022-05-05)

Archive version: 1

File Mode RESTORE Program - T9074L01 (30SEP2022) (AHI)

(C) Copyright 2015 Hewlett Packard Enterprise Development LP

Drives: (\INSIDX.\$Z4CG)

System: \ETINIUM Operating System: J06 Tape Version: 3

Backup options: AUDITED, BLOCKSIZE 8, NO IGNORE, OPEN, PARTONLY OFF,
INDEXES IMPLICIT

WARNING-7147 Files created and stored via OSS and SQL/MX objects are not
supported.

Restore time: 6May2024 20:25 Backup time: 18Apr2024 14:18 Page: 1

Tape: 1	Code	EOF	Last modif	Owner	RWEP	Type	Rec Bl
\$ETINET.YINE413P							
	EMSFILT1	101	162 22Nov2023 10:28	255,101	NNNN		
	EMSFILT2	845	178 4Jun2014 16:40	255,101	NNNN		
	EMSFUPIN	101	2190 4Jun2014 16:39	255,101	NNNN		
	OBWIN1	101	318 22Nov2023 10:00	255,101	NNNN		
	OEMS	101	2278 22Nov2023 10:00	255,101	NNNN		
	OEMS2	101	2580 22Nov2023 9:59	255,101	NNNN		
	OEMSFILT	845	152 4Jun2014 16:40	255,101	NNNN		
	OEXT	101	2712 21Nov2023 11:23	255,101	NNNN		
	ORWIN1	101	2370 22Nov2023 9:59	255,101	NNNN		
	SCFIN1	101	612 21Nov2023 11:21	255,101	NNNN		
	BBEXT	500	2274528 18Apr2024 11:19	255,101	NNNN		
	BBLIB	500	4622008 18Apr2024 11:13	255,101	NNNN		
	CRYPTO	500	35690016 18Apr2024 11:03	255,101	NNNN		
	SSL	500	6123288 18Apr2024 11:02	255,101	NNNN		

Summary Information

Files restored = 14 Files not restored = 0

FUP SECURE \$ETINET.YINE413P.EMSFILT*, NNNN

Editing OEMS2...

Editing OBWIN1...

Editing ORWIN1...

Editing OEXT...

Editing SCFIN1 ...

FUP SECURE \$ETINET.YINE413P.BBEXT,NCNC,PROGID

Editing OEMS...

-----> BackBox Peripheral node installed in \$ETINET.YINE413P,

-----> from \$ETINET.YINGQC.BBE413PAK.

-----> Please verify if any error message was issued above.

The available options for the installation macro are:

1. Input PAK File: Location of the distribution PAK file.
Select 1 and enter the name of the PACK file installed for the domain manager.
2. Target Sub-Volume: Installation sub-volume.
Default value is the current sub-volume.
3. Install All Programs or Peripheral Node
"A" (All) to install all programs on the NonStop node that will host the Domain Manager.
"P" (Peripheral node) to install only the node specific components, such as the EMS Extractor



The macro should detect the peripheral node. If this is not the case, the peripheral node was installed as a domain node and it might be useful to abort the installation and clean the sub-volume before re-installing. For more info about cleaning a sub-volume see [Cleaning a Sub-Volume for a Peripheral Node](#).

4. Initial Installation or Update

“I” to execute initial installation.

“U” to update programs, distributed TAcl macro, and EMS filter files.

This value is automatically presented by the macro, if it detects the presence of BackBox configuration files in the target sub-volume.



If the default value is not (U) program Update, the existing configuration files were not found in the target sub-volume.

Enter 2 to point to the right sub-volume.

- 5. Spooler Location. Value used to customize some of the installed OBEY files.
- 6. TCP/IP Process Name Value used for BBEXT in the OEXT and SCFIN1 files.
- 31. EMS Extractor (BBEXT) Process BBEXT process name in the OEXT and SCFIN1 files.
- 32. Domain Subvol Domain location.

Check the values presented and enter I. The macro will update the programs for a peripheral node and set the proper object code TNS/R vs. TNS/E. It will, however, leave all configurations, data files, and sample OBEY unmodified.

For a NSK components installation macro sample, see the [Appendix](#).

Cleaning a Sub-Volume for a Peripheral Node

A sub-volume for a peripheral node contains only the files for running the EMS Extractor:

BBEXT	EMS Event extractor program
BBEXTCFG	Obsolete file
EMSFILT1	EMS filter for tape events
OEXT	OBEY file to start up manually BBEXT
SCFIN1	SCF input to define BBEXT as generic process in the NSK Kernel

The installation macro will also install files for running BBLM- the controller for the tape library media changer. These files can be ignored if the domain is set only for the BackBox product.

VTC UPGRADE

Only one version of the software can be installed on a VTC Windows server. When the VTC is shared by several domains, the VTC should be disabled in each domain until all are at the same version-level.

When using multiple BackBox domain configurations:

- In shared NSK: each domain runs its own EMS Extractor(s).
- In shared VTC: all domains must be included in the Domain List page displayed by the UI Client started on this VTC.

On a site with several VTCs, consider withdrawing a VTC from regular use for testing a new major version in a distinct domain. This can be done by disabling the VTC in the production domain and keeping the same configuration.

With a complex configuration, especially when each VTC is connected to several NSK nodes, it might be useful to have a printed copy of the overall tape drive configurations before making any changes. The current BackBox UI can be used to produce a print-screen of the status page.

Following the update assume usage of the local Administrator account (Administrator user). Using an account with administrator privileges may require extra configuration step.

Requirements



Before starting the upgrade run the server preparation script: `VtcServerPreparation.ps1`. For more info, see [VBackBox Installation Guide](#).

- Verify the version of the ATTO configuration tool, driver and firmware of the FC card. All installation details will be found in the installation package located at `AttoCelerityFC-20191101`.
- Supported servers: Windows 2016 / Windows 2019 / Windows 2022

Components	Version	Location
ATTO Configuration Tool	4.38	Tools\win_app_configtool_438
ATTO Celerity driver FC-162P HBA	1.62.0f1	\AttoCelerityFC-20191101\FC16 \win_drv_celerity16\1.62.0f1\x64\Win10
ATTO Celerity flash FC-16	01 November, 2018	FC16\win_fls_celerity16-32_181101
ATTO Celerity driver FC-81EN, FC-82EN or FC-84EN HBA	2.07.0f1	\FC8\win_drv_celerity8\2.07.0f1\x64
ATTO Celerity flash FC-81EN, FC-82EN or FC-84EN HBA	06 April, 2018	\FC8\win_fls_celerity8_180406

Detailed instructions on how to upgrade these components can be found in the [Appendix](#).

Some enterprise policies may only require the usage of the WHQL signed driver. The signed drivers are found in the same location as the unsigned ones (for you current adapter with the mention signed in the folder name).

Before proceeding with the upgrade stop the following processes and programs:

- VTC Management Console
- BackBox UI
- Event Viewer
- Performance Monitor
- Internet Explorer
- MS-Windows Administrative Tools and Services
- VTC Services (Admin, Asynclog, Management Service, Emulator (FC), Script Controller).

Uninstall the Old BackBox Software

Depending on the version you are upgrading to, may have to uninstall the following:

- BackBox UI Client
- BackBox Virtual Tape Controller

Install the New VTC Software

Install the VTC application from the BackBox distribution package directory VTC-E4.13.nnn: run `setup.exe`.

Post-Upgrade

After the installation it is recommended to:

- Reboot the VTC
The VTC Windows services will start automatically and will issue messages to EMS.
- Verify that the BackBox Windows Services are started
Check that both VTC Admin and VTC Virtual Tape Emulator (FC) services report their state to EMS.

USER INTERFACE UPGRADE

Before installing the new version of the User Interface the old version has to be uninstalled. Follow the procedure to uninstall the old version: in the MS-Windows Control panel > Add or Remove Programs remove the program BackBox UI Client.

Install User Interface

1. From the BackBox distribution package directory UI-E4.13.nnn:run setup.exe.
2. Run the User Interface application to enter the domain address.



The domain address (domain name, domain IP address, and port) should be the same as the address set in the VTC.

Refer to the [User Interface Installation](#) manual for details.

POST-UPGRADE

To ensure a good functioning of the upgraded BackBox components (re)start the following services:

- Tape devices on each NSK node of the domain

Access the EMS messages or run OEMS2 to get the tape messages on a dedicated TACL session. SCF START TAPE \$VT*
Verify that SCF starts the devices and that the new message is logged in EMS for each started device. 5061 (domain)-(vtc)-I5061
Virtual Tape Device \(\node).\\$(device) STARTED

At the end, the command MEDIACOM INFO TAPEDRIVE will list all tape drives. Verify that the device type (LT03, LT04, LT06) displayed is expected.

- Restart the EMS Extractor

Examples:

```
OBEY OEXT
```

```
SCF START PROCESS $ZZKRN.#BBOXEXT
```

If BBEXT abends (abnormal process termination) at startup with the EMS message F1001- Error 70 from second FILE_OPEN_ on EMSDIST.

See the [\\$BBEXT EMS Extractor Abend at Startup](#) section in the [BackBox Messages Manual and Troubleshooting](#)

- Run Tests

Node Status Tests - on the User Interface check the Status page for each Guardian node.

1. RESTORE Tests: Restore should be tested first
1. BACKUP Tests: Be aware that it may be impossible to restore a backup done with the current version if you back out of the update.
2. Statistics ENFORM Report: OBEY OBB021.

- Enable SSL (optional) - Refer to [SSL Setup](#) manual.
- Restart TMF dumping and tape applications for each NSK node that is part of the domain - Re-enable the TMF audit, restart the regular tape applications schedule.

After the installation it is recommended to:

- Reboot the VTC
The VTC Windows services will start automatically and will issue messages to EMS.
- Verify that the BackBox Windows Services are started
Check that both VTC Admin and VTC Virtual Tape Emulator (FC) services report their state to EMS.

APPENDIX

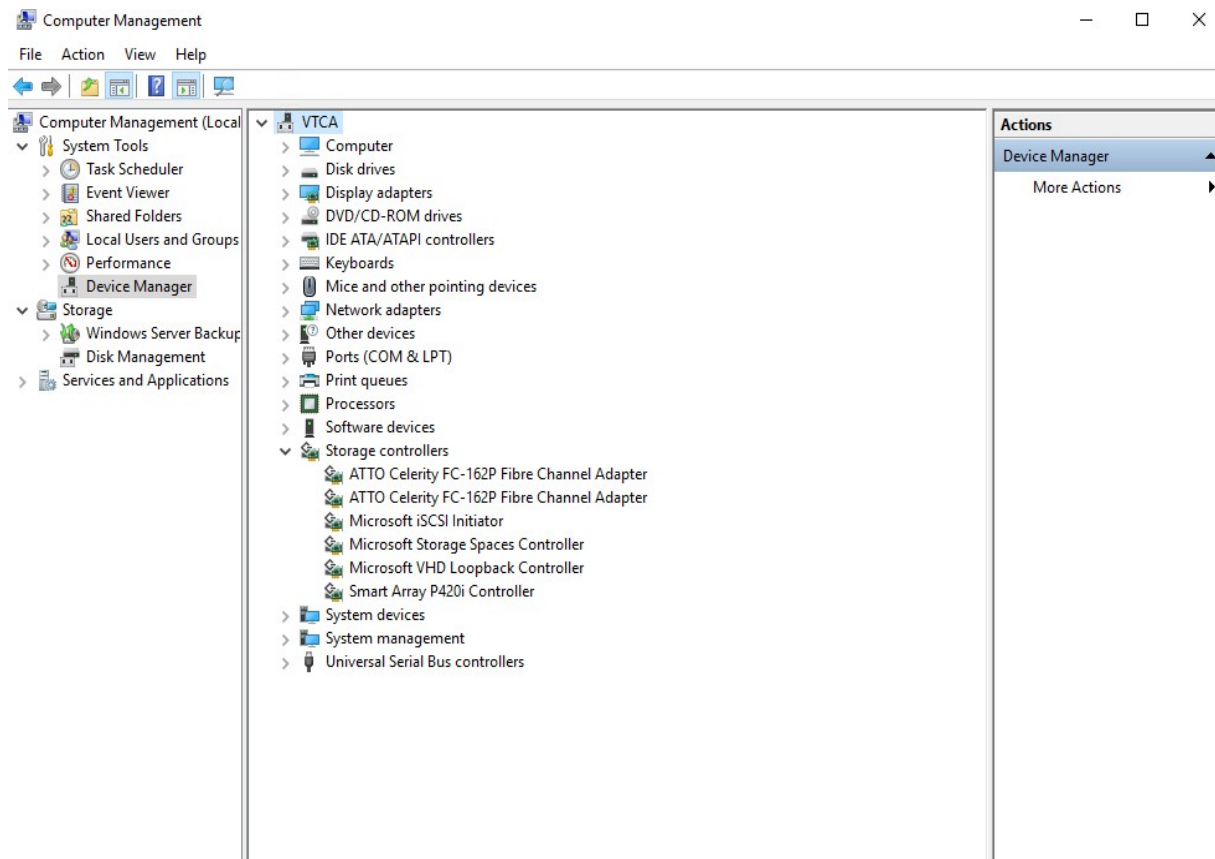
A. ATTO Celerity Installation/Upgrade

Install the FC Adapter Driver

Access the repository folder and navigate to the appropriate installation sub-directory according to the model adapter installed and according to the OS platform.

Once at the appropriate location, double-click on setup.exe and follow the installer instructions.

In the Device Manager, verify that all FC adapters are installed correctly.



Install the FC Configuration Tool

Perform this sub-task only if there is no ATTO Configuration Tool already installed or the currently installed version is an older one.

Access the repository folder and navigate to the AttoCelerityFC-20191101 directory, sub directory.

Double-click on ConfigTool_438.exe and follow the install instructions. Accept all defaults and choose a Full installation. If a previous version of the ATTO configuration tool is already installed, you may be prompted to uninstall the old version first.



Introduction

- Introduction
- License Agreement
- Choose Install Folder
- Feature Set
- Pre-Installation Summary
- Installing...
- Install Complete

InstallAnywhere will guide you through the installation of ATTO ConfigTool v4.38.

It is strongly recommended that you quit all programs before continuing with this installation.

Click the 'Next' button to proceed to the next screen. If you want to change something on a previous screen, click the 'Previous' button.

You may cancel this installation at any time by clicking the 'Cancel' button.

InstallAnywhere

Cancel

Previous

Next

Follow the wizard installation, by clicking Next and then agree with the terms and conditions.



License Agreement

- Introduction
- License Agreement
- Choose Install Folder
- Feature Set
- Pre-Installation Summary
- Installing...
- Install Complete

Installation and Use of ATTO ConfigTool v4.38 Requires Acceptance of the Following License Agreement:
 ATTO Technology, Inc. License Agreement

NOTICE WE ARE WILLING TO LICENSE THE ENCLOSED SOFTWARE TO YOU ONLY ON THE CONDITION THAT YOU ACCEPT ALL OF THE TERMS CONTAINED IN THIS LICENSE AGREEMENT.

PLEASE READ THE LICENSE AGREEMENT CAREFULLY BEFORE INSTALLING THIS SOFTWARE. BY INSTALLING THIS SOFTWARE YOU AGREE TO BE BOUND BY THE TERMS OF THIS AGREEMENT. IF YOU DO NOT AGREE TO THESE TERMS WE ARE UNWILLING TO LICENSE THE SOFTWARE TO YOU AND YOU SHOULD NOT INSTALL IT. IN SUCH CASE, PROMPTLY RETURN THE UNOPENED DISK.

I accept the terms of the License Agreement

InstallAnywhere

Cancel

Previous

Next

Choose or browse the installation folder and proceed.



- Introduction
- License Agreement
- Choose Install Folder
- Feature Set
- Pre-Installation Summary
- Installing...
- Install Complete

Choose Install Folder

Where Would You Like to Install?

C:\Program Files (x86)\ATTO Technology\ConfigTool Client

Restore Default Folder

Choose...

InstallAnywhere

Cancel

Previous


Next


On the Feature Set page, you have the option of installing only the application without ConfigTool system service or the full package. Choose the appropriate option.



- Introduction
- License Agreement
- Choose Install Folder
- Feature Set
- Pre-Installation Summary
- Installing...
- Install Complete

Choose Install Set

 **Application only**
 Installs only the application, without the ConfigTool system service. Choose this if you do not have adapters in this system, and will only be managing remote systems from this computer.

 **Full Installation**
 Installs the application as well as the ConfigTool system service. Choose this option if you have any adapters installed on this computer.

InstallAnywhere

Cancel

Previous

Next

Before installing the tool, the summary page will display details related to the product you are about to install. Click **Install** to start the installation.



- Introduction
- License Agreement
- Choose Install Folder
- Feature Set
- Pre-Installation Summary
- Installing...
- Install Complete

Pre-Installation Summary

Please Review the Following Before Continuing:

Product Name:
ATTO ConfigTool v4.38

Install Folder:
C:\Program Files (x86)\ATTO Technology\ConfigTool Client

Install Set:
Full Installation

Product Features:
 ConfigTool Service
 ConfigTool Client Application
 Notification Applet
 DNS-SD Client Support
 DNS-SD Service

InstallAnywhere

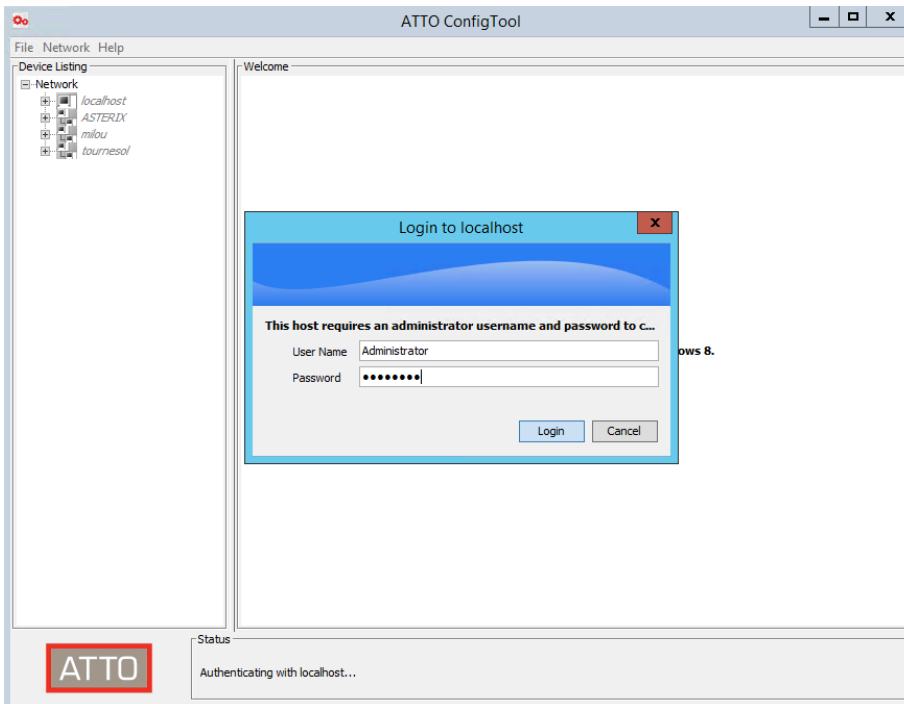
Cancel

Previous

Install

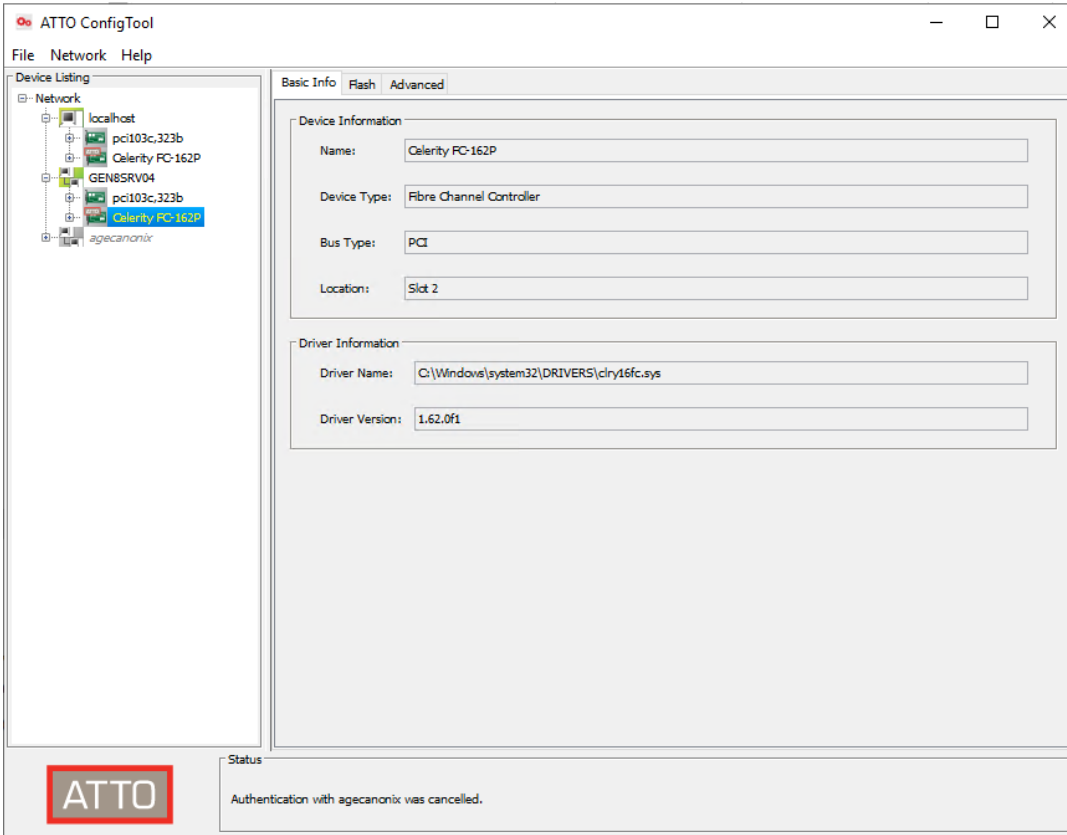
Validate FC Card Channel Parameters

Start the ATTO ConfigTool (from the Windows Start menu > All Programs > ATTO ConfigTool). When it opens, a user login will be required with the local administrator privilege. To log in, expand the localhost node in the left panel.

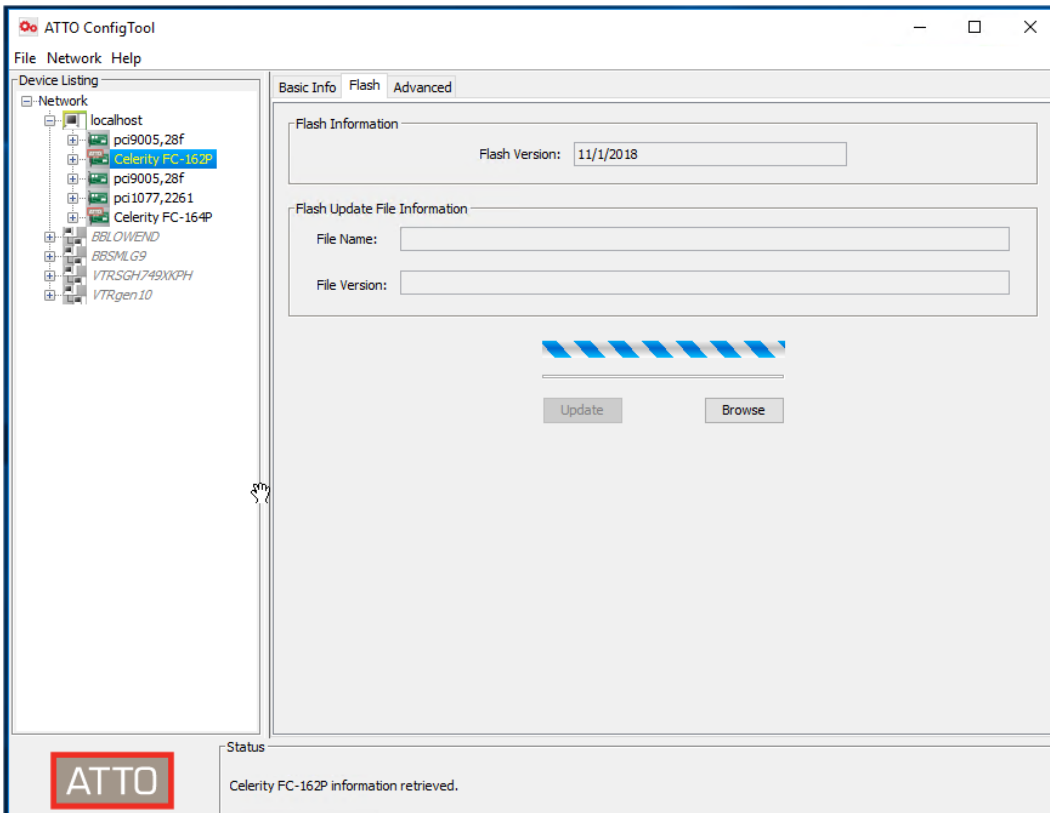


Once logged in, it is possible to expand the localhost node in the left panel. For each Celerity Device verify the drivers version and install the latest version (signed or unsigned):

Driver Version	Latest Version
FC-8X	2.07.0f1
FC-16	1.62.0f1




Under the Flash tab, the Flash version for each card should be the driver version that matches the driver version that was just installed. Otherwise, it will be necessary to update the Flash version.




Expand the current Celerity Device node.

For each Channel listed, verify that the default values match the ones shown when activate the NVRAM tab. Otherwise, update all mismatched fields. In particular, one parameter may require changing the connection mode. It is recommended to use "Point to Point" connection.

	Setting a FC channel Data Rate to Auto can result in automatic selection of a slower connection speed, thereby reducing the performance. The rate should be forced according to the table below, based on the NonStop FC port type that it will be connected to.
-----------------------------------------------------------------------------------	------------------------------------------------------------------------------------------------------------------------------------------------------------------------------------------------------------------------------------------------------------------

When the changes are completed for each port, press the Commit Button. Wait for the Commit confirmation status message before continuing. Select the channels one by one and commit each of them.

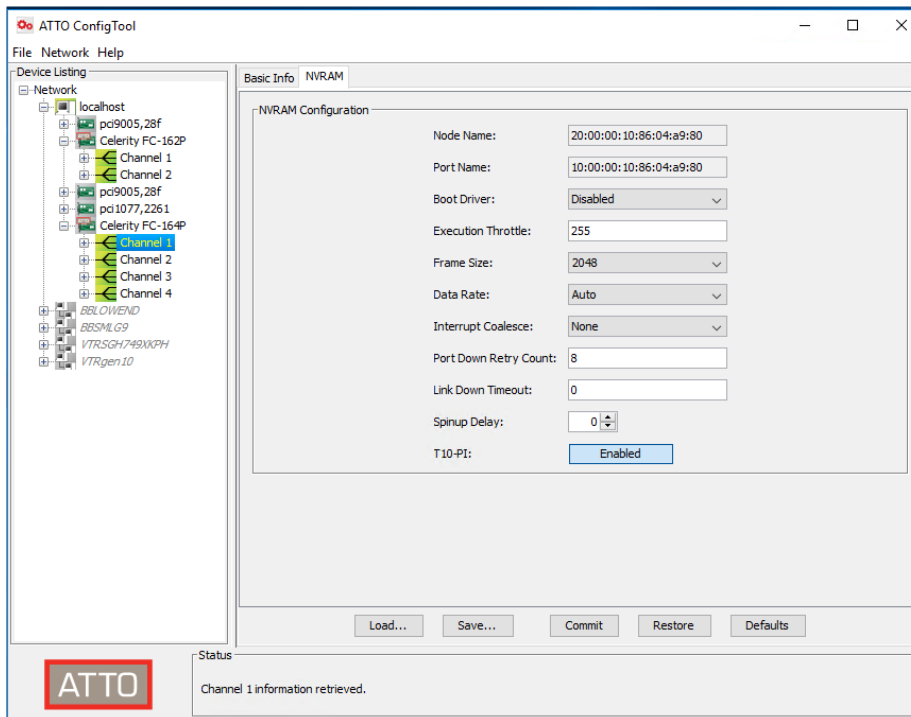
	All parameters and Flash updates can be completed before restarting the server.
-----------------------------------------------------------------------------------	---------------------------------------------------------------------------------

Data Rate	Celerity FC HBA type	NonStop connectivity type
8Gbits	FC-8, FC-16	G6 Storage CLIM with optional 8 Gbps HBA
16Gbits	FC-16	G10 Storage CLIM with FC-16

If a FC switch is to be used to share-use a single NonStop FC port with multiple VTC or Bridge FC ports, one or more of the following additional settings may be required:

- Disabling Initiator Mode of the ATTO FC card in the Windows Registry
- Making sure the Connection Mode of NVRAM is set to Point To Point
- Configuring an FC switch zone and customizing the switch setting

Each switch and its environment may require different settings. Contact your ETI-NET account representative for assistance.




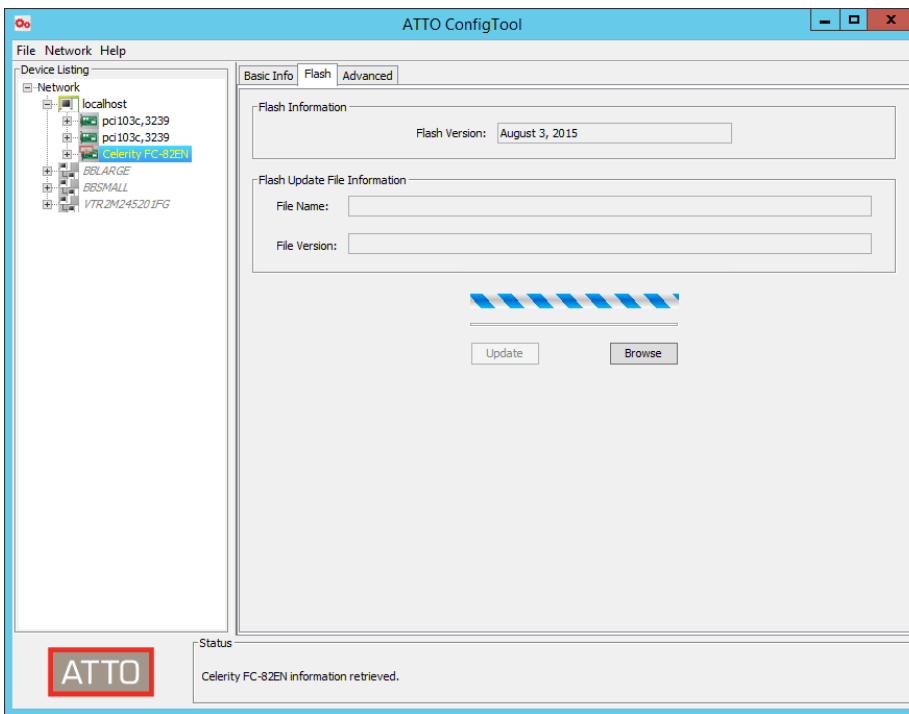
The screenshot shows the ATTO ConfigTool interface. On the left is a 'Device Listing' tree with 'Channel 1' selected. The main area is titled 'Basic Info | NVRAM' and contains the 'NVRAM Configuration' section with the following settings:

- Node Name: 20:00:00:10:86:04:a9:80
- Port Name: 10:00:00:10:86:04:a9:80
- Boot Driver: Disabled
- Execution Throttle: 255
- Frame Size: 2048
- Data Rate: Auto
- Interrupt Coalesce: None
- Port Down Retry Count: 8
- Link Down Timeout: 0
- Spinup Delay: 0
- T10-PI: Enabled

Buttons at the bottom include Load..., Save..., Commit, Restore, and Defaults. A status bar at the bottom left shows the ATTO logo and the message 'Channel 1 information retrieved.'

Update FC Adapter Flash Version

	This step is only required if the Flash version is older than April 06, 2018 (FC-8xEN models) and November 01, 2018 (for FC-16).
-------------------------------------------------------------------------------------	----------------------------------------------------------------------------------------------------------------------------------



To update the Flash version, first press the **Browse** button. Then navigate up to the **repository** folder directory, **AttoCelerityFC- 20191101** for **FC-8xEN** models and select the Flash Bundle file proposed by the Configuration Tool. Refer to table for requirements in the **VTC Upgrade** section to verify if you have the right driver version. To complete the selection, press the **Open** button. You will be allowed to review the selected Flash Bundle file information. Click the **Update** button to start the process.

B. Moving the Sub-Volume

The upgrade procedure updates the sub-volume in place. In some circumstances, it might be necessary to move the sub-volume to another disk or to rename it.

This is a separate procedure. Follow the steps below to perform it:

1. All tape activity must be stopped.
2. BackBox activity must be stopped:
 - Stop all EMS Extractors of the domain
3. SCF ABORT PROCESS #ZZKRN.#bbext-name in the local system and in all peripheral systems
 - Close all UI sessions
 - Ensure that no batch jobs are running (such as the daily OBB017)
4. Point the TCP/IP LISTNER to the new Domain manager sub-volume:
 - Update the system TCP/IP PORTCONF to point the BackBox port (usually 4561) to BBSV in the new sub-volume.
 - Restart the appropriate TCP/IP LISTNER(s)
5. Stop any program still running in the old sub-volume.
 - VOLUME <old-sub-volume>
 - STATUS *, PROG *, STOP
1. Copy the old sub-volume to the new sub-volume, considering that the VOLUME file has an alternate key file VOLUME0:
 - Either by PAK/UNPAK:

```
PAK -ext 500 -max 200 BBBKUP, <old-sub-volume>.* , AUDITED, OPEN, LISTALL
UNPAK BBBKUP, *.*.* , MAP NAMES $*.*.* TO <new-sub-volume>.* , AUDITED, OPEN,
LISTALL
```

- Or by FUP DUP:

```
VOLUME <new-sub-volume>
FUP DUP <old-subvolume>.*,
*,SOURCEDATE FUP ALTER VOLUME,
ALTFILE (0, VOLUME0) FUP ALTER
VOLUME, AUDIT
FUP ALTER STATE, AUDIT
```

7. Edit the BBSETUP macro and OBEY files to change <old-sub-volume> by <new-sub-volume>:

```
VOLUME <new-sub-
volume> TEDIT
BBSETUP
TEDIT OBB017
TEDIT other obey files, distributed obey files are named OBB* and SCFIN*
```

8. In the UI:

- Start the UI
- Sign in
- Configuration tab
- Switch to Edit mode
- In the Domain page, review the disk location of:

○ Trace Sub Volume (must be different from the <new-sub-volume>)

○ Stats File Name (should be in the <new-sub-volume>)

- Click the Update button
- Click Save.

9. Start the EMS Extractor:

- Adjust the definition of the EMS Extractor as \$ZZKRN permanent process

1. Change the location of BBEXT and BBEXTCFG to <new-sub-volume>. Sample permanent process definition:

```
ADD PROCESS
$ZZKRN.#BBOXEXT, &
PROGRAM
$DATA05.BBOX.BBEXT, &
NAME $BBEXT, &
AUTORESTART
3, & CPU
FIRST, &
HOMETERM
$ZHOME, &
STARTMODE
APPLICATION, &
USERID SUPER.OPER
ADD PROCESS, &
(DEFINE
=BackBox_BBSETUP, &
CLASS MAP, &
FILE \ETINIUM.$DATA05.BBOX.BBSETUP)
```

- Start the modified EMS Extractor process

```
SCF START PROCESS #ZZKRN.#bbext-name
```

- Look for an EMS messagesuch as:

```
yyyy-mm-dd 12:48:40 \ETINIUM.$BBEX ETINET.100.100 3517 $BBEX-I3517 EMS
Extractor started for domain BPAK (BBEXT E0407 10OCT2016).
```

11. In NetBatch, adjust OBB017 and possible other BackBox related job definitions (search for old- subvol), and reschedule

them.



After moving the sub-volume(s), all tape applications can be restarted.

C. Moving an EMS Extractor Sub-Volume

A sub-volume containing only an EMS Extractor (peripheral node) is simpler to move.

Stop the EMS Extractor

```
SCF ABORT PROCESS #ZZKRN.#bbext-name
```

Execute the Start the EMS Extractor of the previous section.

D. Upgrade Execution Sample

```
$DATA15 UPE411 56> run INSE4TXT
Searching for latest PAK file $*.*.BBE413*
press Break key to stop ...
... found $DATA16.YING.BBE413PK (2024-MAR-20 10:50)
... found $DATA15.BPAKTMPE.BBE413 (2024-APR-18 14:18)
... found $DATA15.BPAKTMPE.BBE413A (2024-JAN-24 13:53)
... found $DATA15.BPAKTMPE.BBE413C (2024-FEB-19 12:7)
... found $DATA15.BPAKTMPE.BBE413D (2024-MAR-27 14:16)
... found $DATA15.BPAKTMPE.BBE413X (2024-APR-11 12:20)

----- Installation of BackBox E4.13 NSK components -----

 1. Input PAK file ..... : $DATA15.BPAKTMPE.BBE413 (APR-18 14:18)
 2. Target subvol ..... : $DATA15.UPE411
 3. Install All or Peripheral node: All
 4. Initial installation or Update: Program update
 5. Spooler location ..... : $S.#BBOX
 6. TCPIP process name ..... : $ZTC2
31. EMS Extractor (BBEXT) process : $BBEXT

(Number) option to modify, (I) to install, or (Q) to quit :31

EMS Extractor (BBEXT) process name ($BBEXT) :$eu411

----- Installation of BackBox E4.13 NSK components -----

 1. Input PAK file ..... : $DATA15.BPAKTMPE.BBE413 (APR-18 14:18)
 2. Target subvol ..... : $DATA15.UPE411
 3. Install All or Peripheral node: All
 4. Initial installation or Update: Program update
 5. Spooler location ..... : $S.#BBOX
 6. TCPIP process name ..... : $ZTC2
31. EMS Extractor (BBEXT) process : $EU411

(Number) option to modify, (I) to install, or (Q) to quit :i

Confirm to proceed (Y/N) : y

-----> The whole target subvol (pgm+data)
         must be duplicated once, before any upgrade activity
-----> press ANY to continue:

Empty subvol to backup $DATA15.UPE411 ( ) :upe411r

-----> copying the installation subvol ...
File Utility Program - T6553H02 - (01MAY2018)      System \ETINIUM
(C)Copyright 1984-2016 Hewlett Packard Enterprise Development LP
DUP $DATA15.UPE411.* where filecode <> 130,      $DATA15.UPE411R.*, SOURCEDATE
FILES DUPLICATED: 102
```

```
ALTER $DATA15.UPE411R.VOLUME, &
ALTFILE (0, $DATA15.UPE411R.VOLUME0)
----> Installation subvol saved
```

must replace these files, before upgrade
UNPAK - File decompression program - T1255H01 - (2016-02-15)

```
Archive version: 1
File Mode RESTORE Program - T9074H01 (19OCT2016) (AGX)
(C)Copyright 2015 Hewlett Packard Enterprise Development LP
Drives: (\ETINIUM.$Z5KN)
System: \ETINIUM Operating System: J06 Tape Version: 3
Backup options: AUDITED, BLOCKSIZE 8, NO IGNORE, OPEN, PARTONLY OFF,
INDEXES IMPLICIT
*WARNING-7147* Files created and stored via OSS and SQL/MX objects are not
supported.
Restore time: 26Apr2024 13:54 Backup time: 18Apr2024 14:18 Page: 1
```

Tape: 1	Code	EOF	Last modif	Owner	RWEP	Type	Rec Bl
\$DATA15.UPE411							
	MACROS	101	141060 11Apr2024 12:19	255,100	NCNC		
	OBB011	101	722 22Nov2023 10:32	255,100	NCNC		
	OBB012	101	736 22Nov2023 10:33	255,100	NCNC		

Summary Information

Files restored = 3 Files not restored = 0

Loaded from \$DATA15.UPE411.BBSETUP:

BBSV_ADDR	BBSV_PORT	BBSV_TCPIP	VTC_OBJECT	EZX_MAXRETRY
EZX_RETRYDELAY	EZX_TIMEOUT			

Loaded from \$DATA15.UPE411.MACROS:

BB_BBOX_PGM_VERSION	BB_041_TIMEOUT
BB_041_DEVICE	BB_041_LABELS
BB_041_PROCESS	BB_VALID_HHMMSS
BB_QUALIFY_SUBVOL	BB_GET_EXISTING_FILE
BB_CHECK_EXIST_FILE	BB_FILENAME_SYNTAX
BB_VALID_TIMESTAMP	BB_TCPIP
BB_GET_TMP_FILE	IS_NUMERIC
LOG_TEXT	BB_GET_DEFAULT_VOL
BB_GET_IN_SUBVOL	BB000_COLLECT
BB001_TIME_EDIT	BB002_VERSION
BB003_UPGRADE	BB003_GET_OPTION
BB003_VALID_TARGET	BB003_VALID_BKUP
BB003_UPGRADE_EXEC	BB017_FREE_EXPIRED
BB018_DEFAULTS	BB030_EXTRACT_STATS
BB020_RESERVE	BB022_CHECK_SPACE
BB004_DATASTORE_UPDATEPW	BB004_DATASTORE_VALIDATE_ACC
BB005_DATASTORE_MIGRATION	BB023_DEL_BACKEDUP
BB024_LIB_SYNC	BB026_EXPORT_CATALOG
BB027_IMPORT_CATALOG	BB036_BACKUP_STORE
BB038_FREE_LIB_MEDIA	BB040_VIRTUALIZE_PREP
BB041_VIRTUALIZE_START	BB042_VIRTUALIZE
LISTT	VIEWT
TMFC2	BB054_SHUTDOWN

```
UNPAK /NAME/ $DATA15.BPAKTMPE.BBE413, ($*.* WHERE FILECODE > 800,
$*.BBE413E.*, $*.*.OBB015, $*.*.OEXT, $*.*.sc
finl, $*.*.OBB004, $*.*.OBB004B, $*.*.OBB005, $*.*.JOBSTAT*, $*.*.OBB
018, $*.*.OBB019, $*.*.OBB021, $*.*.OBB025, $*.*.OBB032, $*.*.OBB038, $*.*.
OBB039, $*.*.OBB055, $*.*.VOLEXT, $*.*.MACROS, $*.*.BBREST, $*.*.EMSFI
LT*, $*.*.OEMS2), VOL $DATA15.UPE411, MYID,OPEN,LISTALL, AUDITED
UNPAK - File decompression program - T1255H01 - (2016-02-15)
```

```
Archive version: 1
File Mode RESTORE Program - T9074H01 (19OCT2016) (AGX)
(C)Copyright 2015 Hewlett Packard Enterprise Development LP
Drives: (\ETINIUM.$Z5KZ)
System: \ETINIUM Operating System: J06 Tape Version: 3
Backup options: AUDITED, BLOCKSIZE 8, NO IGNORE, OPEN, PARTONLY OFF,
INDEXES IMPLICIT
*WARNING-7147* Files created and stored via OSS and SQL/MX objects are not
supported.
Restore time: 26Apr2024 13:54 Backup time: 18Apr2024 14:18 Page: 1
```

Tape: 1	Code	EOF	Last modif	Owner RWE	Type	Rec Bl
\$DATA15.UPE411						
BB011	888	5632	4Jun2014 16:40	255,100 NCNC		
BB012	888	5120	16Oct2023 10:16	255,100 NCNC		
BB018	888	12288	25Oct2023 13:56	255,100 NCNC		
BB019	888	8704	29Jun2016 11:26	255,100 NCNC		
BB021	888	11776	11Nov2014 10:11	255,100 NCNC		
BB025	888	7680	4Jun2014 16:40	255,100 NCNC		
BB032	888	4608	4Jun2014 16:40	255,100 NCNC		
BB038	888	5120	16Oct2023 13:33	255,100 NCNC		
BB039	888	11264	4Jun2014 16:40	255,100 NCNC		
BBREST	101	27248	22Nov2023 10:25	255,100 NCNC		
EMSFILT1	101	162	22Nov2023 10:28	255,100 NCNC		
EMSFILT2	845	178	4Jun2014 16:40	255,100 NCNC		
JOBSTAT		0	27Jan2022 16:05	255,100 NCNC	K	1288 4
JOBSTAT0		0	27Jan2022 16:07	255,100 NCNC	K	146 4
MACROS	101	141060	11Apr2024 12:19	255,100 NCNC		
OBB004	101	2580	22Nov2023 10:09	255,100 NCNC		
OBB004B	101	4198	22Nov2023 10:11	255,100 NCNC		
OBB005	101	1536	22Nov2023 10:10	255,100 NCNC		
OBB015	101	206	22Nov2023 10:12	255,100 NCNC		
OBB018	101	6858	22Nov2023 10:33	255,100 NCNC		
OBB019	101	7248	22Nov2023 10:34	255,100 NCNC		
OBB021	101	7144	22Nov2023 10:35	255,100 NCNC		
OBB025	101	6858	22Nov2023 10:35	255,100 NCNC		
OBB032	101	470	22Nov2023 10:18	255,100 NCNC		
OBB038	101	744	22Nov2023 10:37	255,100 NCNC		
OBB039	101	6858	22Nov2023 10:37	255,100 NCNC		
OBB055	101	850	22Nov2023 10:36	255,100 NCNC		
OEMS2	101	2580	22Nov2023 9:59	255,100 NCNC		
OEMSFILT	845	152	4Jun2014 16:40	255,100 NCNC		
OEXT	101	2712	21Nov2023 11:23	255,100 NCNC		
SCFIN1	101	612	21Nov2023 11:21	255,100 NCNC		
VOLEXT		0	4Jun2014 16:39	255,100 NCNC	E	932 4
BB010	800	2035536	18Apr2024 10:55	255,100 NCNC		
BB015	800	266320	18Apr2024 10:55	255,100 NCNC		
BB030	800	119496	18Apr2024 10:55	255,100 NCNC		
BB031	800	5199784	18Apr2024 10:55	255,100 NCNC		
BB033	800	55976	18Apr2024 10:53	255,100 NCNC		
BB034	800	50392	18Apr2024 10:54	255,100 NCNC		
BB037	800	510240	18Apr2024 10:54	255,100 NCNC		
BB042	800	388528	18Apr2024 10:54	255,100 NCNC		
BB043	800	51016	18Apr2024 10:54	255,100 NCNC		
BB044	800	900560	17Apr2024 16:44	255,100 NCNC		
BB045	800	424864	17Apr2024 16:47	255,100 NCNC		

Restore time: 26Apr2024 13:54 Backup time: 18Apr2024 14:18

Page: 2

Tape: 1	Code	EOF	Last modif	Owner RWE	Type	Rec Bl
BB053	800	1682992	17Apr2024 16:44	255,100 NCNC		
BB055	800	2072448	17Apr2024 16:44	255,100 NCNC		
BB056	800	1993280	17Apr2024 16:47	255,100 NCNC		
BBCMD	800	1782552	17Apr2024 16:49	255,100 NCNC		
BBDBM	800	7068304	17Apr2024 16:43	255,100 NCNC		
BBDELVOL	800	231128	17Apr2024 16:45	255,100 NCNC		
BBEXT	800	2723944	17Apr2024 16:47	255,100 NCNC		
BBFIXVOL	800	231872	17Apr2024 16:49	255,100 NCNC		
BBLIB	800	5383096	18Apr2024 10:54	255,100 NCNC		
BBMERCAT	800	244264	17Apr2024 16:45	255,100 NCNC		
BBPCODE	800	1663856	17Apr2024 16:48	255,100 NCNC		
BBSV	800	6657088	17Apr2024 16:46	255,100 NCNC		
BBULIST	800	97416	17Apr2024 16:48	255,100 NCNC		
BBVERCER	800	25968	17Apr2024 16:33	255,100 NCNC		
CRYPTO	800	44898768	17Apr2024 16:34	255,100 NCNC		
ETISSLST	800	49936	17Apr2024 14:00	255,100 NCNC		
SSL	800	7418816	17Apr2024 16:33	255,100 NCNC		
TAPERD	800	102616	17Apr2024 16:45	255,100 NCNC		
TAPEWR	800	273288	17Apr2024 16:49	255,100 NCNC		
TRCLIST	800	110960	17Apr2024 16:49	255,100 NCNC		

Summary Information

Files restored = 63 Files not restored = 0

FUP SECURE \$DATA15.UPE411.BBSV,CCCC,PROGID

FUP SECURE \$DATA15.UPE411.EMSFILT*, NNNN

FUP SECURE \$DATA15.UPE411.OPER, NCNC

Editing OEMS2...
Editing OBWIN1...
Editing ORWIN1...
Editing OBB018...
Editing OBB019...
Editing OBB021...
Editing OBB025...
Editing OBB032...
Editing OBB039...
Editing OBB055 ...
Editing OBB015...
Editing OEXT...
Editing SCFIN1 ...

FUP SECURE \$DATA15.UPE411.BBEXT,NCNC,PROGID

Editing SSLCFG ...

Loaded from \$DATA15.UPE411.BBSETUP:

BBSV_ADDR	BBSV_PORT	BBSV_TCPIP	VTC_OBJECT	EZX_MAXRETRY
EZX_RETRYDELAY	EZX_TIMEOUT			

Loaded from \$DATA15.UPE411.MACROS:

BB_BBOX_PGM_VERSION	BB_041_TIMEOUT
BB_041_DEVICE	BB_041_LABELS
BB_041_PROCESS	BB_VALID_HHMMSS
BB_QUALIFY_SUBVOL	BB_GET_EXISTING_FILE
BB_CHECK_EXIST_FILE	BB_FILENAME_SYNTAX
BB_VALID_TIMESTAMP	BB_TCPIP
BB_GET_TMP_FILE	IS_NUMERIC
LOG_TEXT	BB_GET_DEFAULT_VOL
BB_GET_IN_SUBVOL	BB000_COLLECT
BB001_TIME_EDIT	BB002_VERSION
BB003_UPGRADE	BB003_GET_OPTION
BB003_VALID_TARGET	BB003_VALID_BKUP
BB003_UPGRADE_EXEC	BB017_FREE_EXPIRED
BB018_DEFAULTS	BB030_EXTRACT_STATS
BB020_RESERVE	BB022_CHECK_SPACE
BB004_DATASTORE_UPDATEPW	BB004_DATASTORE_VALIDATE_ACC
BB005_DATASTORE_MIGRATION	BB023_DEL_BACKEDUP
BB024_LIB_SYNC	BB026_EXPORT_CATALOG
BB027_IMPORT_CATALOG	BB036_BACKUP_STORE
BB038_FREE_LIB_MEDIA	BB040_VIRTUALIZE_PREP
BB041_VIRTUALIZE_START	BB042_VIRTUALIZE
LISTT	VIEWT
TMFC2	BB054_SHUTDOWN

-----> Whole BackBox updated in \$DATA15.UPE411,

-----> from \$DATA15.BPAKTMPE.BBE413.

-----> Please verify if any error message was issued above.

check NSKCRT: \ETINIUM.\$DATA15.UPE411.NSKCRT

NSKCRT issuer : /C=CA/ST=QUEBEC/L=MONTREAL/O=ETINET/CN=NONSTOP/emailAddress=support@etinet.com

Found O=ETINET Found CN=NONSTOP Found emailAddress=support@etinet.com

This NSKCRT is the Etinet pre-H412 selfsign certificate

ABENDED: \$Z5MN

CPU time: 0:00:00.049

1: Process terminated with warning diagnostics

-----> BBVERCER RETURN NOT zero

-----> This domain is using Etinet pre 4.12 selfsigned certificates

-----> Updating Etinet selfsigned certificates

UNPAK - File decompression program - T1255H01 - (2016-02-15)

Archive version: 1

File Mode RESTORE Program - T9074H01 (19OCT2016) (AGX)

(C)Copyright 2015 Hewlett Packard Enterprise Development LP

Drives: (\ETINIUM.\$Z5MT)

System: \ETINIUM Operating System: J06 Tape Version: 3

Backup options: AUDITED, BLOCKSIZE 8, NO IGNORE, OPEN, PARTONLY OFF,
INDEXES IMPLICIT

WARNING-7147 Files created and stored via OSS and SQL/MX objects are not supported.

Tape: 1	Code	EOF	Last modif	Owner	RWEP	Type	Rec Bl
\$DATA15.UPE411							
	NSKCR	1316	17Apr2023 21:25	255,100	NCNC		
	NSKDER	1773	18Apr2023 13:05	255,100	NCNC		
	SSLCFG	2286	11Oct2023 13:23	255,100	NCNC		
	VTCRT	1316	17Apr2023 21:24	255,100	NCNC		

Summary Information

Files restored = 4 Files not restored = 0
 Editing SSLCFG ...

-----> Is the result OK (Y/N): y

Loaded from \$DATA15.UPE411.BBSETUP:

BBSV_ADDR	BBSV_PORT	BBSV_TCPIP	VTC_OBJECT	EZX_MAXRETRY
EZX_RETRYDELAY	EZX_TIMEOUT			

Loaded from \$DATA15.UPE411.MACROS:

BB_BBOX_PGM_VERSION	BB_041_TIMEOUT
BB_041_DEVICE	BB_041_LABELS
BB_041_PROCESS	BB_VALID_HMMSS
BB_QUALIFY_SUBVOL	BB_GET_EXISTING_FILE
BB_CHECK_EXIST_FILE	BB_FILENAME_SYNTAX
BB_VALID_TIMESTAMP	BB_TCPIP
BB_GET_TMP_FILE	IS_NUMERIC
LOG_TEXT	BB_GET_DEFAULT_VOL
BB_GET_IN_SUBVOL	BB000_COLLECT
BB001_TIME_EDIT	BB002_VERSION
BB003_UPGRADE	BB003_GET_OPTION
BB003_VALID_TARGET	BB003_VALID_BKUP
BB003_UPGRADE_EXEC	BB017_FREE_EXPIRED
BB018_DEFAULTS	BB030_EXTRACT_STATS
BB020_RESERVE	BB022_CHECK_SPACE
BB004_DATASTORE_UPDATEPW	BB004_DATASTORE_VALIDATE_ACC
BB005_DATASTORE_MIGRATION	BB023_DEL_BACKEDUP
BB024_LIB_SYNC	BB026_EXPORT_CATALOG
BB027_IMPORT_CATALOG	BB036_BACKUP_STORE
BB038_FREE_LIB_MEDIA	BB040_VIRTUALIZE_PREP
BB041_VIRTUALIZE_START	BB042_VIRTUALIZE
LISTT	VIEWT
TMFC2	BB054_SHUTDOWN

Backup Version : 04.12
 Installing Version: 04.13

\$DATA15 UPE411 57>

E. Installation Macro Sample

```
$DATA15 YINE413 9> run INSE4TXT
Searching for latest PAK file $*.*.BBE413*
press Break key to stop ...
... found $DATA16.YING.BBE413PK (2024-MAR-20 10:50)
... found $DATA15.BPAKTMPE.BBE413 (2024-APR-18 14:18)
... found $DATA15.BPAKTMPE.BBE413A (2024-JAN-24 13:53)
... found $DATA15.BPAKTMPE.BBE413C (2024-FEB-19 12:7)
... found $DATA15.BPAKTMPE.BBE413D (2024-MAR-27 14:16)
... found $DATA15.BPAKTMPE.BBE413X (2024-APR-11 12:20)
```

----- Installation of BackBox E4.13 NSK components -----

1. Input PAK file : \$DATA15.BPAKTMPE.BBE413 (APR-18 14:18)
2. Target subvol : \$DATA15.YINE413
3. Install All or Peripheral node: All
4. Initial installation or Update: Initial
5. Spooler location : \$S.#BBOX
6. TCPIP process name : \$ZTC2
31. EMS Extractor (BBEXT) process : \$BBEXT
33. Domain manager TCPIP address. : 127.0.0.1

34. Domain manager TCPIP port.... : 4561
(Number) option to modify, (I) to install, or (Q) to quit :31
EMS Extractor (BBEXT) process name (\$BBEXT) :\$ye413

----- Installation of BackBox E4.13 NSK components -----

1. Input PAK file : \$DATA15.BPAKTMPE.BBE413 (APR-18 14:18)
2. Target subvol : \$DATA15.YINE413
3. Install All or Peripheral node: All
4. Initial installation or Update: Initial
5. Spooler location : \$S.#BBOX
6. TCPIP process name : \$ZTC2
31. EMS Extractor (BBEXT) process : \$YE413
33. Domain manager TCPIP address. : 127.0.0.1
34. Domain manager TCPIP port.... : 4561

(Number) option to modify, (I) to install, or (Q) to quit :33

Domain manager TCPIP address (127.0.0.1 to loop back): 192.168.20.63

----- Installation of BackBox E4.13 NSK components -----

1. Input PAK file : \$DATA15.BPAKTMPE.BBE413 (APR-18 14:18)
2. Target subvol : \$DATA15.YINE413
3. Install All or Peripheral node: All
4. Initial installation or Update: Initial
5. Spooler location : \$S.#BBOX
6. TCPIP process name : \$ZTC2
31. EMS Extractor (BBEXT) process : \$YE413
33. Domain manager TCPIP address. : 192.168.20.63
34. Domain manager TCPIP port.... : 4561

(Number) option to modify, (I) to install, or (Q) to quit :34

Domain manager TCPIP process port : 4756

----- Installation of BackBox E4.13 NSK components -----

1. Input PAK file : \$DATA15.BPAKTMPE.BBE413 (APR-18 14:18)
2. Target subvol : \$DATA15.YINE413
3. Install All or Peripheral node: All
4. Initial installation or Update: Initial
5. Spooler location : \$S.#BBOX
6. TCPIP process name : \$ZTC2
31. EMS Extractor (BBEXT) process : \$YE413
33. Domain manager TCPIP address. : 192.168.20.63
34. Domain manager TCPIP port.... : 4756

(Number) option to modify, (I) to install, or (Q) to quit :i

Confirm to proceed (Y/N) : y
must replace these files, before upgrade
UNPAK - File decompression program - T1255H01 - (2016-02-15)

Archive version: 1
File Mode RESTORE Program - T9074H01 (19OCT2016) (AGX)
(C)Copyright 2015 Hewlett Packard Enterprise Development LP
Drives: (\ETINIUM.\$Z7QJ)
System: \ETINIUM Operating System: J06 Tape Version: 3
Backup options: AUDITED, BLOCKSIZE 8, NO IGNORE, OPEN, PARTONLY OFF,
INDEXES IMPLICIT
WARNING-7147 Files created and stored via OSS and SQL/MX objects are not supported.
Restore time: 2May2024 17:12 Backup time: 18Apr2024 14:18 Page: 1

Tape: 1	Code	EOF	Last modif	Owner	RWEP	Type	Rec	Bl
\$DATA15.YINE413								
	MACROS	101	141060 11Apr2024 12:19	255,100	NCNC			
	OBB011	101	722 22Nov2023 10:32	255,100	NCNC			
	OBB012	101	736 22Nov2023 10:33	255,100	NCNC			

Summary Information

Files restored = 3 Files not restored = 0

UNPAK /NAME/ \$DATA15.BPAKTMPE.BBE413, (\$*.BBE413.*, \$*.BBE413E.*),
 MAP NAMES \$*.* TO \$DATA15.YINE413.*, MYID,OPEN,LISTALL,AUDITED
 UNPAK - File decompression program - T1255H01 - (2016-02-15)

Archive version: 1
 File Mode RESTORE Program - T9074H01 (19OCT2016) (AGX)
 (C)Copyright 2015 Hewlett Packard Enterprise Development LP
 Drives: (\ETINIUM.\$Z7QL)
 System: \ETINIUM Operating System: J06 Tape Version: 3
 Backup options: AUDITED, BLOCKSIZE 8, NO IGNORE, OPEN, PARTONLY OFF,
 INDEXES IMPLICIT
 WARNING-7147 Files created and stored via OSS and SQL/MX objects are not
 supported.
 Restore time: 2May2024 17:12 Backup time: 18Apr2024 14:18 Page: 1

Tape: 1	Code	EOF	Last modif	Owner	RWEP	Type	Rec	Bl
\$DATA15.YINE413								
	BB011	888	5632 4Jun2014 16:40	255,100	NCNC			
	BB012	888	5120 16Oct2023 10:16	255,100	NCNC			
	BB018	888	12288 25Oct2023 13:56	255,100	NCNC			
	BB019	888	8704 29Jun2016 11:26	255,100	NCNC			
	BB021	888	11776 11Nov2014 10:11	255,100	NCNC			
	BB025	888	7680 4Jun2014 16:40	255,100	NCNC			
	BB032	888	4608 4Jun2014 16:40	255,100	NCNC			
	BB038	888	5120 16Oct2023 13:33	255,100	NCNC			
	BB039	888	11264 4Jun2014 16:40	255,100	NCNC			
	BBREST	101	27248 22Nov2023 10:25	255,100	NCNC			
	BBSETUP	101	2922 22Nov2023 10:27	255,100	NCNC			
	BBSVCFG	101	2088 13Apr2021 14:11	255,100	NCNC			
	EMSFILT1	101	162 22Nov2023 10:28	255,100	NCNC			
	EMSFILT2	845	178 4Jun2014 16:40	255,100	NCNC			
	EMSFUPIN	101	2190 4Jun2014 16:39	255,100	NCNC			
	EMSOUT		0 4Jun2014 16:39	255,100	NCNC	E	560	4
	JOBSTAT		0 27Jan2022 16:05	255,100	NCNC	K	1288	4
	JOBSTAT0		0 27Jan2022 16:07	255,100	NCNC	K	146	4
	MACROS	101	141060 11Apr2024 12:19	255,100	NCNC			
	NSKCRT		1316 17Apr2023 21:25	255,100	NCNC			
	NSKDER		1773 18Apr2023 13:05	255,100	NCNC			
	OBB004	101	2580 22Nov2023 10:09	255,100	NCNC			
	OBB004B	101	4198 22Nov2023 10:11	255,100	NCNC			
	OBB005	101	1536 22Nov2023 10:10	255,100	NCNC			
	OBB011	101	722 22Nov2023 10:32	255,100	NCNC			
	OBB012	101	736 22Nov2023 10:33	255,100	NCNC			
	OBB015	101	206 22Nov2023 10:12	255,100	NCNC			
	OBB017	101	2306 22Nov2023 10:15	255,100	NCNC			
	OBB018	101	6858 22Nov2023 10:33	255,100	NCNC			
	OBB019	101	7248 22Nov2023 10:34	255,100	NCNC			
	OBB021	101	7144 22Nov2023 10:35	255,100	NCNC			
	OBB025	101	6858 22Nov2023 10:35	255,100	NCNC			
	OBB032	101	470 22Nov2023 10:18	255,100	NCNC			
	OBB038	101	744 22Nov2023 10:37	255,100	NCNC			
	OBB039	101	6858 22Nov2023 10:37	255,100	NCNC			
	OBB055	101	850 22Nov2023 10:36	255,100	NCNC			
	OBWIN1	101	318 22Nov2023 10:00	255,100	NCNC			
	OEMS	101	2278 22Nov2023 10:00	255,100	NCNC			
	OEMS2	101	2580 22Nov2023 9:59	255,100	NCNC			
	OEMSFILT	845	152 4Jun2014 16:40	255,100	NCNC			
	OEXT	101	2712 21Nov2023 11:23	255,100	NCNC			
	OPER		0 4Jun2014 16:39	255,100	NCNC	K	4062	4
	ORWIN1	101	2370 22Nov2023 9:59	255,100	NCNC			

Restore time: 2May2024 17:12 Backup time: 18Apr2024 14:18 Page: 2

Tape: 1	Code	EOF	Last modif	Owner	RWEP	Type	Rec	Bl
	SCFIN1	101	612 21Nov2023 11:21	255,100	NCNC			
	SCFIN2	101	2294 4Jun2014 16:39	255,100	NCNC			
	SCFIN4	101	158 4Jun2014 16:39	255,100	NCNC			
	SCFIN5	101	2424 4Jun2014 16:39	255,100	NCNC			
	SCFIN6	101	2430 4Jun2014 16:39	255,100	NCNC			
	SSLCFG	101	2286 11Oct2023 13:23	255,100	NCNC			
	STATE		0 4Jun2014 16:39	255,100	NCNC	K	446	4

STATS		0	4Jun2014	16:39	255,100	NCNC	E	4000	4
USERLIST	180	3253	28Nov2019	16:38	255,100	NCNC			
VOLEXT		0	4Jun2014	16:39	255,100	NCNC	E	932	4
VOLUME		0	4Jun2014	16:39	255,100	NCNC	K	4056	4
VOLUME0		0	4Jun2014	16:39	255,100	NCNC	K	46	4
VTCCRT		1316	17Apr2023	21:24	255,100	NCNC			
BB010	800	2035536	18Apr2024	10:55	255,100	NCNC			
BB015	800	266320	18Apr2024	10:55	255,100	NCNC			
BB030	800	119496	18Apr2024	10:55	255,100	NCNC			
BB031	800	5199784	18Apr2024	10:55	255,100	NCNC			
BB033	800	55976	18Apr2024	10:53	255,100	NCNC			
BB034	800	50392	18Apr2024	10:54	255,100	NCNC			
BB037	800	510240	18Apr2024	10:54	255,100	NCNC			
BB042	800	388528	18Apr2024	10:54	255,100	NCNC			
BB043	800	51016	18Apr2024	10:54	255,100	NCNC			
BB044	800	900560	17Apr2024	16:44	255,100	NCNC			
BB045	800	424864	17Apr2024	16:47	255,100	NCNC			
BB053	800	1682992	17Apr2024	16:44	255,100	NCNC			
BB055	800	2072448	17Apr2024	16:44	255,100	NCNC			
BB056	800	1993280	17Apr2024	16:47	255,100	NCNC			
BBCMD	800	1782552	17Apr2024	16:49	255,100	NCNC			
BBDBM	800	7068304	17Apr2024	16:43	255,100	NCNC			
BBDELVOL	800	231128	17Apr2024	16:45	255,100	NCNC			
BBEXT	800	2723944	17Apr2024	16:47	255,100	NCNC			
BBFIXVOL	800	231872	17Apr2024	16:49	255,100	NCNC			
BBLIB	800	5383096	18Apr2024	10:54	255,100	NCNC			
BBMERCAT	800	244264	17Apr2024	16:45	255,100	NCNC			
BBPCODE	800	1663856	17Apr2024	16:48	255,100	NCNC			
BBSV	800	6657088	17Apr2024	16:46	255,100	NCNC			
BBULLIST	800	97416	17Apr2024	16:48	255,100	NCNC			
BBVERCER	800	25968	17Apr2024	16:33	255,100	NCNC			
CRYPTO	800	44898768	17Apr2024	16:34	255,100	NCNC			
ETISLST	800	49936	17Apr2024	14:00	255,100	NCNC			
SSL	800	7418816	17Apr2024	16:33	255,100	NCNC			
TAPERD	800	102616	17Apr2024	16:45	255,100	NCNC			
TAPEWR	800	273288	17Apr2024	16:49	255,100	NCNC			
TRCLIST	800	110960	17Apr2024	16:49	255,100	NCNC			

Summary Information

Files restored = 87 Files not restored = 0

FUP SECURE \$DATA15.YINE413.BBSV,CCCC,PROGID

FUP SECURE \$DATA15.YINE413.EMSFILT*, NNNN

FUP SECURE \$DATA15.YINE413.OPER, NCNC

FUP SECURE \$DATA15.YINE413.VOLUME*, NCNC

Editing OEMS2...

Editing OBWIN1...

Editing ORWIN1...

Editing OBB018...

Editing OBB019...

Editing OBB021...

Editing OBB025...

Editing OBB032...

Editing OBB039...

Editing OBB055 ...

Editing OBB015...

Editing OEXT...

Editing SCFIN1 ...

FUP SECURE \$DATA15.YINE413.BBEXT,NCNC,PROGID

Editing BBSETUP...

Editing OBB017...

Editing OEMS...

Editing SSLCFG ...

Loaded from \$DATA15.YINE413.BBSETUP:

BBSV_ADDR BBSV_PORT BBSV_TCPIP VTC_OBJECT EZX_MAXRETRY

EZX_RETRYDELAY EZX_TIMEOUT

Loaded from \$DATA15.YINE413.MACROS:


```

BB_BBOX_PGM_VERSION          BB_041_TIMEOUT
BB_041_DEVICE                BB_041_LABELS
BB_041_PROCESS               BB_VALID_HHMMSS
BB_QUALIFY_SUBVOL           BB_GET_EXISTING_FILE
BB_CHECK_EXIST_FILE         BB_FILENAME_SYNTAX
BB_VALID_TIMESTAMP          BB_TCPIP
BB_GET_TMP_FILE             IS_NUMERIC
LOG_TEXT                     BB_GET_DEFAULT_VOL
BB_GET_IN_SUBVOL            BB000_COLLECT
BB001_TIME_EDIT             BB002_VERSION
BB003_UPGRADE               BB003_GET_OPTION
BB003_VALID_TARGET          BB003_VALID_BKUP
BB003_UPGRADE_EXEC          BB017_FREE_EXPIRED
BB018_DEFAULTS              BB030_EXTRACT_STATS
BB020_RESERVE               BB022_CHECK_SPACE
BB004_DATASTORE_UPDATEPW    BB004_DATASTORE_VALIDATE_ACC
BB005_DATASTORE_MIGRATION   BB023_DEL_BACKEDUP
BB024_LIB_SYNC              BB026_EXPORT_CATALOG
BB027_IMPORT_CATALOG        BB036_BACKUP_STORE
BB038_FREE_LIB_MEDIA        BB040_VIRTUALIZE_PREP
BB041_VIRTUALIZE_START      BB042_VIRTUALIZE
LISTT                        VIEWT
TMFC2                        BB054_SHUTDOWN

```

```

-----> Whole BackBox installed in $DATA15.YINE413,
-----> from $DATA15.BPAKTMPE.BBE413.
-----> Please verify if any error message was issued above.
Create initial USER Profile List used for BackBox Access Control
Userlist =\ETINIUM.$DATA15.YINE413.USERLIST, user =SUPER.OPER
$DATA15 YINE413 10>

```

F. Upgrade Installation Macro Values


The macro menu displays the current values for all options. Enter a number to change the corresponding value. Then enter the letter "I" to continue installation and extract appropriate files to the target sub-volume.

The option 4 ("Initial Installation or Update") should not be used. The macro will set the value according the content found in the target sub-volume and will reject a different value.

The macro should detect that BackBox programs in the target sub-volume or in the associated sub- volumes in peripheral nodes are still running.

This detection requires the program utility BB031 that is extracted first from the package; the detection occurs at various steps of the installation, depending on the previous installed version.

If running processes are detected, they are displayed. Letter "S" is used to shutdown the processes before initiating the actual installation by the letter "I".

	If other components (such as the UI or the VTC) are still running, they might restart BackBox NonStop programs.
-------------------------------------------------------------------------------------	-----------------------------------------------------------------------------------------------------------------

When "I" Install option is chosen, the macro will ask for an empty backup sub-volume to receive a copy of the current sub-volume.

The macro will copy the current sub- volume content to the backup sub- volume, upgrade the pro- grams, then propose to convert the data files (depending on the version found in the backup sub- volume). If the user enters the copy that has already been done, the backup sub-volume will be requested to verify the presence of essential files and to use them as file input for the possible data file conversions.

At the installation completion, the macro will load the library of TACL macros and start the macro BB053_UPGRADE for the immediate conversion of the data files. BB053_UPGRADE can also berun later.

See File Conversion Macro BB003_UPGRADE_EXEC. The following screen will be shown:

```

----- Convert NSK BackBox data files to E4.13 version-----
1. Input backup old subvol : $DATA15.LSX314 Version 4.00
2.
2. Target subvol ..... : $DATA15.BBOX Version E4.13(Number) option
to modify, (C) to convert, or (Q) to
quit :c

```

G. Backup Sub-Volume

1. Run the following TACL commands to return to the previous version (downgrade):

```
VOLUME <BackBox-sub-volume>  
FUP DUP <backup-sub-volume>.*, *, PURGE, SOURCEDATE FUP  
ALTER VOLUME, ALTFILE (0, VOLUME0)
```

2. The backup sub-volume will be used as source for the data files conversion. The backup sub-volume is used by the installer macro to identify the current version to be updated by executing VPROC <backup-sub-volume>.BBEXT.

This will indicate which data conversion must be run.

Security

In VTC, an MS-Windows non-interactive log on must be successful with the account configured in the WINDISK data stores. It is recommended to add this account in the standard User group "Backup Operators".

In some setups, this account might be known by the file server only and not by the MS-Windows environment. In such a case, the MS-Windows account must be created, either as an Active Directory account or as a local account in all VTCs - with the same password.

For setups with a MS-Windows account already configured, the user must verify if this account can actually log in the VTCs. It is recommended, as well, to restrict the account to non-interactive log on.

Complete the upgrade with an account that is allowed to interactive log on. When the upgrade is completed, the account can be restricted to non-interactive log on and its password changed.

Scripts

Previously the VTC was running all processes under "Local System" and it had access to any local resources. The processes accessing the files in DataStore will run under the account configured in the Data Store.

The VTC software handles the setup - except for the resources accessed by the scripts. The user must verify in scripts the access to resources.



The conversion of old NonStop data files is handled by the Install macro.



TSM archive scripts: the option Delete backed-up files is available and it can be configured in the Volume group, in order to keep the archived files online in Data Store (only for a few days).