

Sentinel for HPE NonStop

World-class system monitoring for mission-critical operations



What is Sentinel?

Sentinel for HPE NonStop is dynamic operations and service management software for HPE NonStop systems.

It is built on a highly advanced object-based architecture and monitors systems, networks, hardware, subsystems, processes, files, events and even third-party applications. Sentinel's unique design lies in its ability to pull massive active data into a single set of screen objects, providing the means to diagnose a problem in more detail, and in real-time, via context-sensitive drill-down screens.

Sentinel Data Storage (SDS) stores historical metrics including CPU, processes, and disk metrics, which operators can call upon via the Grafana powered dashboards and deliver by exporting to CSV format and through customized reports. CPU metrics can be polled up to every 5 seconds, enabling users to continuously improve digital resilience.

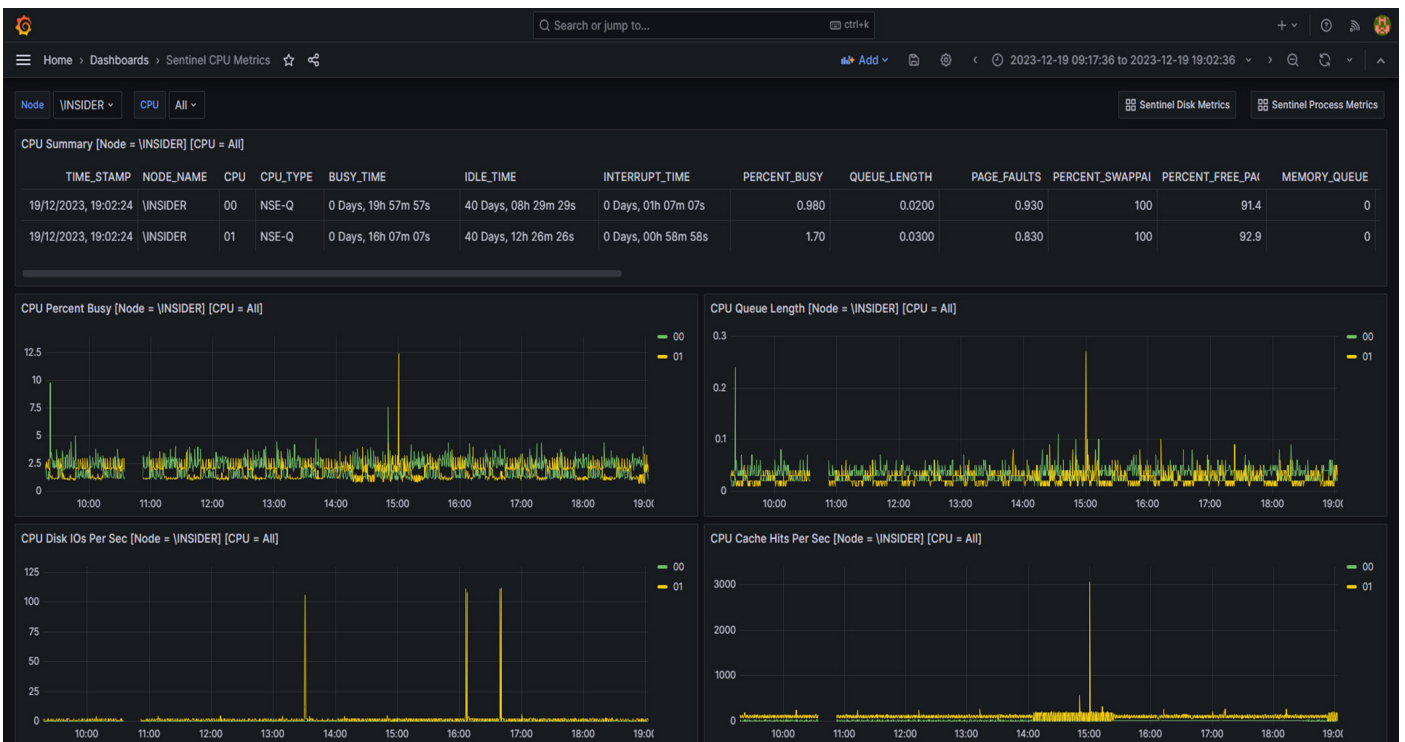


Figure 1. Sentinel Data Storage polling historic CPU information.

Immediate visibility of business process vulnerabilities

Analytics is central to the high performance of enterprise organizations as they invest in digital transformation and respond to tough market conditions. Sentinel monitors all of your HPE NonStop nodes from a single interface, providing business and operations with their own particular view of the enterprise, incorporating the status of applications, infrastructure, subsystems, and associated system and application events. As well as CPU, disk capacity, memory, processes, and file size.

Event management on your HPE NonStop can be challenging. Sentinel offers an unrivalled solution for absorbing non-tokenized Event Management Service (EMS) events submitted by applications, MQ, and OSS and parsing them into unique tokenized EMS events for improved monitoring, management, escalation, and resolution.

Tasks can be configured to automatically resolve problems when they arise, or they can be left to the user's discretion.

In-built security denies or allows access to these tasks so you can rest assured that only authorized personnel will be able to configure or run tasks.

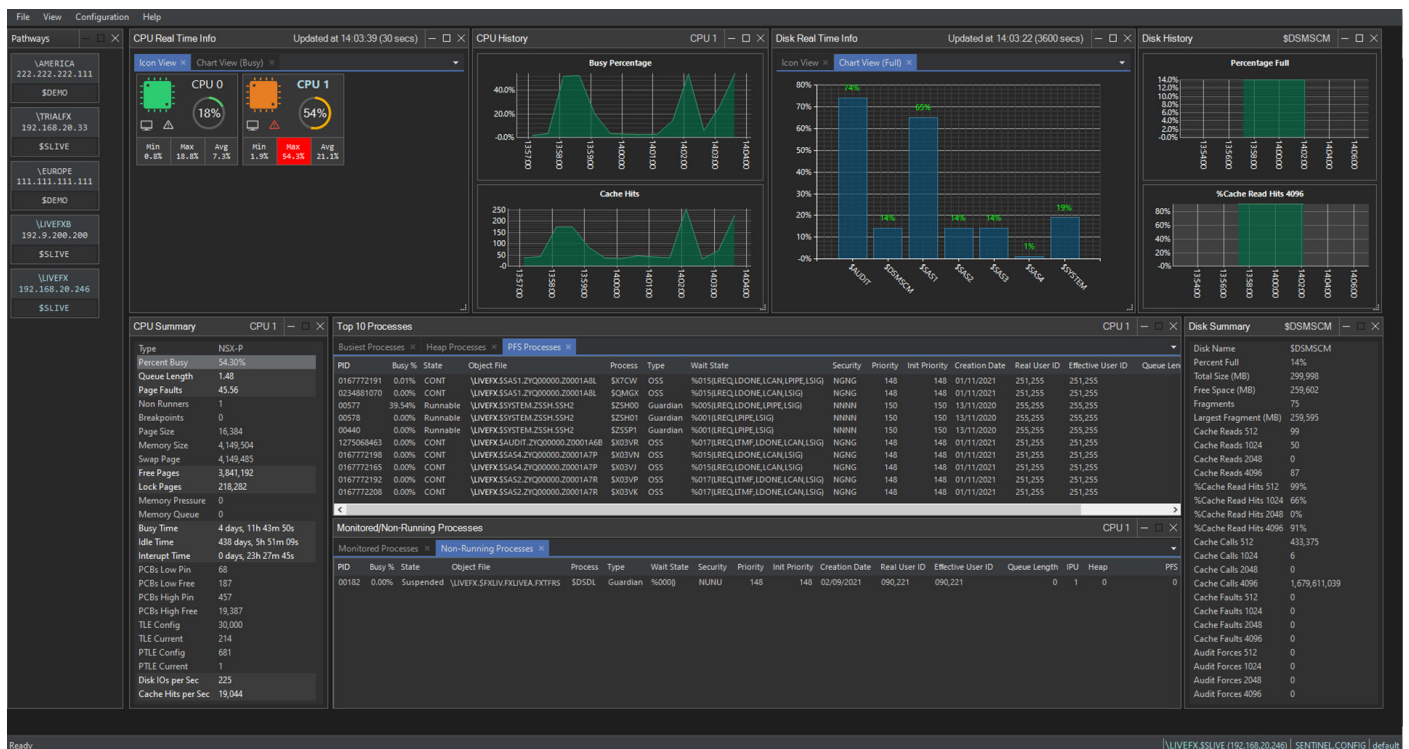


Figure 2. Advanced monitoring of the entire HPE NonStop environment.

Sentinel provides a single solution for all HPE NonStop management needs

Sentinel retrieves performance and capacity statistics from HPE NonStop subsystems and processes and analyses them against pre-configured thresholds. If the thresholds are exceeded, then an EMS event is generated. If a value has returned below its threshold, then a different EMS event is generated. This pair of “up” and “vulnerable” events can be used to animate a Status Monitor icon and force the icon to turn orange (vulnerable) and gray (up).

Key benefits

- Customizable dashboards, providing each operator their own view of the HPE NonStop environment.
- Sentinel corrects faults automatically, using the context of the original event.
- Escalation of alert conditions can be done via a local graphical console or email.
- BackBox monitoring is included in Sentinel for HPE NonStop.
- Legacy applications can be enabled via Sentinel if they are required to participate in a centralized strategy.
- Supports the display of Chinese Double byte (Big 5) encoded EMS events in Console and Token detail.
- Extended monitoring of MQ includes MQ Queue Depth and the state of MQ Channel.



Maximize the EMS subsystem to real-time results

The Event Management Service subsystem is installed on every HPE NonStop system. It is started when your machine is loaded and although it is something that you can tune, you cannot shut it down. It provides the native logging environment for your HPE NonStop system. All the hardware, operating system and utility subsystems write their logging information to EMS. The log messages cover error conditions such as a hardware failure but they also cover basic information such as a tape being loaded. Sentinel uses this information to provide real-time information on visually pleasing, easy-to-follow constructed dashboards.

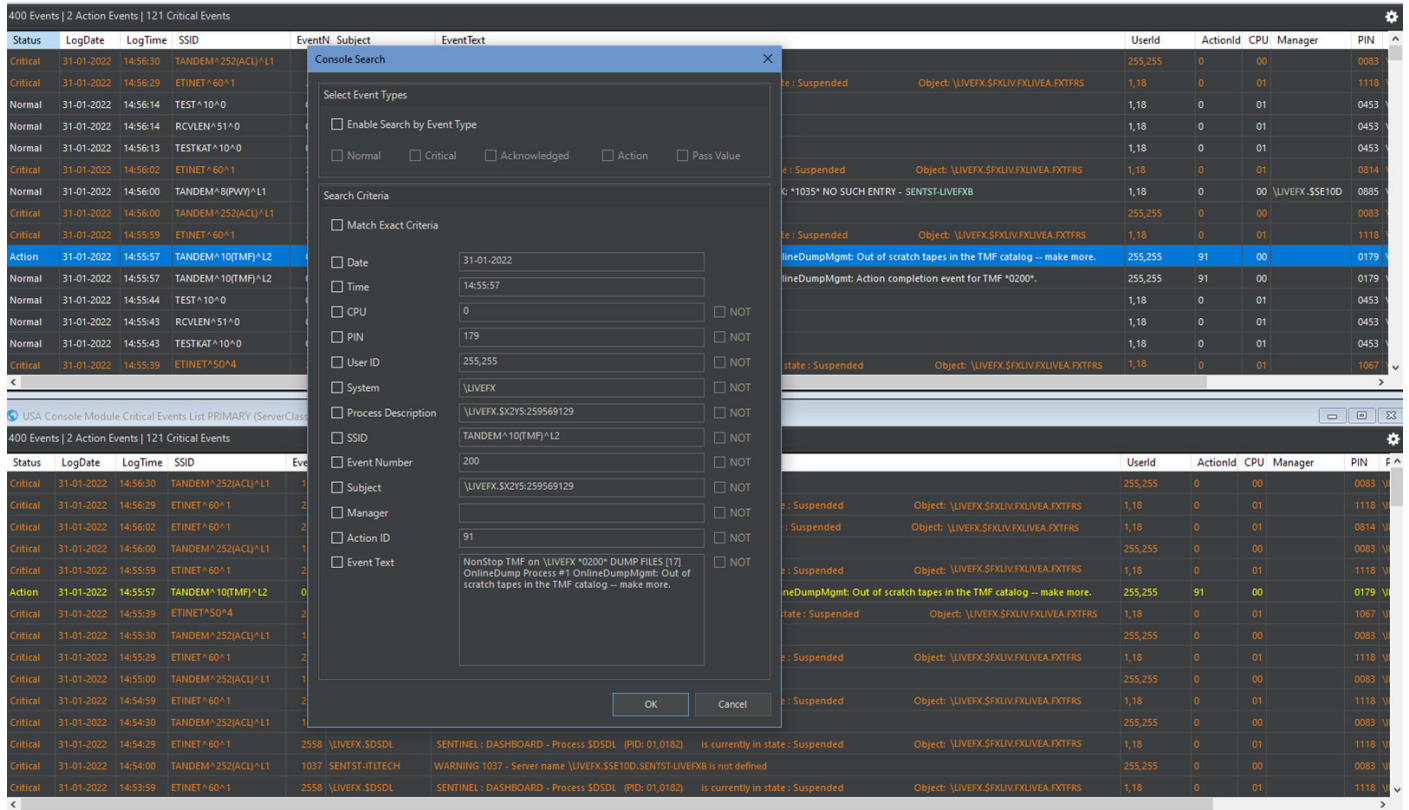


Figure 3. EMS events are highlighted and clearly displayed in priority order.

Get peace of mind with automated escalation, automated problem resolution at the source

TaskMaster is the automation engine of Sentinel.

Sentinel can intercept EMS events that describe error conditions that can be corrected programmatically and without manual intervention and the details of this event can be forwarded to TaskMaster which oversees the implementation of the appropriate automated corrective action.

TaskMaster is used to start up and close down applications based on a specific event being received from an external gateway, so this functionality can deal with more than just corrective action. TaskMaster can be used to run a single or multiple Guardian programs including standard utilities such as DSAP, application programs or TACL scripts. Programs can be run in parallel or serially to cater for different needs.

See an immediate improvement in your HPE NonStop estate with Sentinel

Faster configuration

Auto-Discovery offers an automated process to augment the manual process that allows Sentinel to automatically build and optimally configure critical hardware and software components in the HPE NonStop environment.

Improved OSS visibility

OSS processes are often unnamed but are instead represented by the OSS PID. Sentinel improves the operator's ability to drill into the OSS PID and to get details of what's happening (what files are open, how much memory the process is using, etc.).



Enhanced reporting

Sentinel enables users to perform some of the GUI based maintenance tasks from the command line or from a batch scheduler. These tasks include table archiving, filter compilation and “warmbooting” the software.

Less maintenance

Sentinel is equipped with a variety of reporting tools to help list out your database tables and ease maintenance.

Migration and disaster recovery

Any reaction rules that are built-in one database can be exported to an intermediate transit file which can then be copied to another HPE NonStop node and imported into another Sentinel database. In this way the standard development, test and release cycle can be followed.

System requirements

HPE NonStop system running the HPE NonStop Operating System L19.03 or later, or J06.23 Release Version Update (RVU).

Software requirements

For HPE NonStop systems running the HPE NonStop L-series operating system:

BE177AC	HPE NonStop TNS/X COBOL Runtime Library
BE352AC or BE259AC	HPE NonStop TS/MP (ACS)

For HPE NonStop systems running the HPE NonStop J-series operating system:

QSB02	HPE NonStop COBOL Runtime for TNS/E
QSB81	HPE NonStop COBOL Runtime for TNS
QSR54 or QSR78	HPE NonStop Pathway with TS/MP (ACS)

For Sentinel GUI Client and Sentinel Alert Service

PC	Microsoft Windows PC, server or workstation
Connectivity	TCP/IP v4 connectivity
Windows	Windows 10, Windows 11, Windows Server 2016 or 2019

Additional requirements for Sentinel Data Storage Service (Optional)

SQL Server	Microsoft SQL Server 2019 or 2022
SMSS	Corresponding version of SQL Server Management Studio
Grafana	Grafana OSS 10.2.2

Hardware requirements

For Sentinel GUI Client and Sentinel Alert Service

Processor	3 GHz, 64-bit (x64) processor
RAM	16 GB RAM
Hard disk	1 GB available hard disk space
Resolution	1920 x 1080 is recommended
Monitor	24" or larger color monitor is recommended



Data sheet

Additional requirements for Sentinel Data Storage Service (Optional)

Hard disk	1 GB available hard disk space per month of retained historical data
-----------	--

Ordering information

HPE NonStop servers running the HPE NonStop L-series operating system

BE093AC	Sentinel for HPE NonStop, DVD
BE093ACE	Sentinel for HPE NonStop, E-Media

HPE NonStop servers running the HPE NonStop J-series operating system

QSENTINEL	Sentinel for HPE NonStop, DVD
-----------	-------------------------------

Training and education

Gain the skills you need with training and certification from Hewlett Packard Enterprise. With [HPE NonStop training](#) you accelerate your technology transition, improve operational performance, and get an excellent return on your HPE investment.

Our training is available when and where you need it, through flexible delivery options and a global training capability. More trainings and webinars can be found at nonstop-academy.com.

HPE Financial Services

HPE Financial Services: Creating investment capacity to accelerate digital transformation.

HPE Financial Services helps organizations create the investment capacity they need for digital transformation, in an innovative and sustainable way. HPEFS partners with customers to develop a playbook for their entire IT asset portfolio (from edge to cloud to end user), one that is unique to their aspirations and size. Our financial and asset management solutions are anchored by best-in-class tech upcycling services. For more information, visit: hpe.com/us/en/services/financial-services.html.

HPE Services

Leverage one of the most comprehensive support solutions tailored to meet your specific data center support requirement. HPE Services offers a wide choice of proactive and reactive service levels covering requirements ranging from basic to complex business critical environments. For more information, [visit: HPE Contractual Support Portfolio for HPE NonStop Systems at a glance.](#)

Learn more at

[HPE.com/info/NonStop](https://hpe.com/info/NonStop)

Visit [HPE GreenLake](#)



Chat now (sales)


**Hewlett Packard
Enterprise**

© Copyright 2024 Hewlett Packard Enterprise Development LP. The information contained herein is subject to change without notice. The only warranties for Hewlett Packard Enterprise products and services are set forth in the express warranty statements accompanying such products and services. Nothing herein should be construed as constituting an additional warranty. Hewlett Packard Enterprise shall not be liable for technical or editorial errors or omissions contained herein.

Microsoft, SQL Server, Windows, and Windows Server are either registered trademarks or trademarks of Microsoft Corporation in the United States and/or other countries. All third-party marks are property of their respective owners.

a50005704ENW, Rev. 3