

# C-Deep for HPE NonStop

Real-time transaction monitoring and querying

## What is C-Deep?

C-Deep for HPE NonStop enables payment processors to get instant information on any transaction processed through a payment switch on HPE NonStop—past or present. It's a powerful stand-alone transaction monitoring product or a high-performance add-on to your current BASE24™ solution. It stores and instantly queries historic transactions for 10 years and beyond to help ensure regulatory compliance. A highly configurable alerting engine delivers concise charts, bringing clarity to your data flow. C-Deep gives instant and full visibility into all fields of data and provides an unmatched advantage to understand trends, predict patterns, help ensure [fault tolerance](#), and avoid outages.

**C-Deep for HPE NonStop provides real-time monitoring and comprehensive querying of the transaction flow information created by primary payment engines. As C-Deep is hosted on a Windows Server, there is minimal impact on your HPE NonStop performance.**

C-Deep provides a real-time solution to help visualize, monitor, and query your payment transactions. Products such as BASE24 from ACI provide its users with a range of facilities that allow the customers and account holders of a financial institution to submit card-based transactions from an ATM or POS terminal. The BASE24 application can route these transactions to other members of the ATM/POS service provider community, provide authorization for funds for its customers, and link them into payment systems for accounting purposes.

## C-Deep architecture

C-Deep reads transaction data from the HPE NonStop based Transaction Log File/POS Transaction Log File (TLF/PTLF). The HPE NonStop extraction clients pass this data to the C-Deep collector on the Windows Server. All data processing and analysis takes place on the Windows Server to minimize resource usage on the HPE NonStop.

Processed transaction data is stored in a SQL Server database for a configurable period to allow querying and reporting. The database also supports the following capabilities:

- Complex, rule-based analysis over multiple rows, columns, or systems—with the option to send alerts to multiple channels and user levels
- Graphical representation for real-time metrics and alerts, with drilldowns and root-cause analysis feature—Known as C-Deep Console and accessible via a browser
- Wealth of intraday or longer-term management reporting using standard SQL reporting tools such as Microsoft SQL Reporting Services. The product has built-in standard reports, but users can also customize using the Open Database Connectivity (ODBC) application

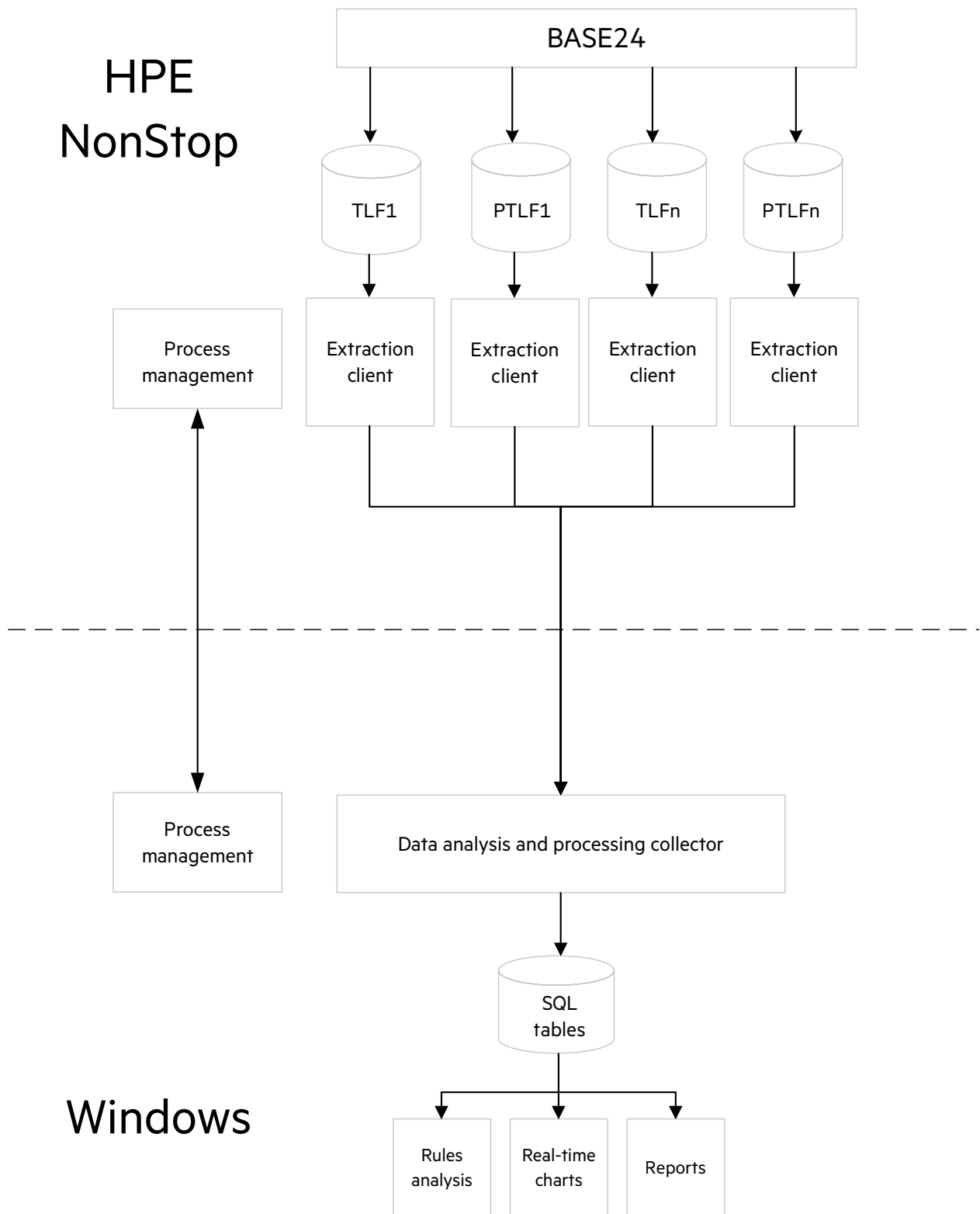


Figure 1. C-Deep architecture overview



## Transaction monitoring features

### HPE NonStop system connections

HPE NonStop systems running the HPE NonStop L- and J-series operating systems are supported by C-Deep for HPE NonStop.

### Real-time charts

Fully customizable real-time charts deliver detailed information in a readable format. Users can drill down from dashboards to investigate issues in greater depth.

### Security

C-Deep provides granular levels of access as standard, allowing administrators to control permissions right down to row level.

### Customizable dashboards

Custom dashboards are easily created to display collected data in a meaningful format, giving you total visibility of your environment, helping to pinpoint any issues instantly.

### Versatility

C-Deep is not limited to BASE24. Whether it's POS or ATM, it can be customized to integrate with a variety of other payment environments including CGI BESS and NCR Authentic.

### Instant information

C-Deep detects critical issues in real time, notifying the appropriate people when thresholds are exceeded, and automatically applying corrective actions to resolve problems.

### Data harvesting

In addition to delivering real-time data, C-Deep submits scheduled transaction reports to various areas of your organization providing critical business insight for risk management and improved sales opportunities.

### Database management

Partitioning and annual databases allow for improved scaling and simplified management of data storage.

## System requirements

<b>Windows Server hardware</b>	Minimum of 64 GB of RAM 2.1 GHz, 8 cores 2 x 1 TB 12G system disk drives
<b>Windows Server software</b>	Microsoft Windows 2019 Standard or later Microsoft Internet Explorer 11, Google™ Chrome
<b>HPE NonStop system</b>	HPE NonStop system running the HPE NonStop Operating System L20.05, J06.23, or later versions
<b>Additional software</b>	Microsoft SQL Server 2019 Apache Tomcat 9.0 Java



## Ordering information

### HPE NonStop servers running the HPE NonStop L-series operating system

SKU	Description
BE095AC	C-Deep for HPE NonStop, DVD
BE095ACE	C-Deep for HPE NonStop, E-Media

### HPE NonStop servers running the HPE NonStop J-series operating system

SKU	Description
QCDEEP	C-Deep for HPE NonStop, DVD

## Training and education

Gain the skills you need with training and certification from Hewlett Packard Enterprise. With [HPE NonStop training](#), you accelerate your technology transition, improve operational performance, and get an excellent return on your HPE investment.

Our training is available when and where you need it, through flexible delivery options and a global training capability. More trainings and webinars can be found at [nonstop-academy.com](https://nonstop-academy.com).

## HPE Financial Services

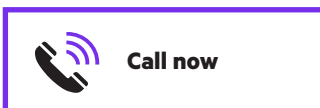
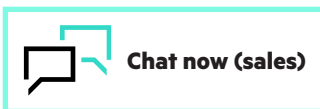
HPE Financial Services: Creating investment capacity to accelerate digital transformation.

HPE Financial Services helps organizations create the investment capacity they need for digital transformation, in an innovative and sustainable way. HPEFS partners with customers to develop a playbook for their entire IT asset portfolio (from edge to cloud to end user), one that is unique to their aspirations and size. Our financial and asset management solutions are anchored by best-in-class tech upcycling services. For more information, visit: [hpe.com/us/en/services/financial-services.html](https://hpe.com/us/en/services/financial-services.html).

## HPE Pointnext Services

Leverage one of the most comprehensive support solutions tailored to meet your specific data center support requirement. HPE Pointnext Services offers a wide choice of proactive and reactive service levels covering requirements ranging from basic to complex business-critical environments. For more information, see [HPE Support Portfolio for HPE NonStop](#).

Make the right purchase decision.  
Contact our presales specialists.



## Learn more at

[hpe.com/info/nonstop](https://hpe.com/info/nonstop)

Visit [HPE GreenLake](#)

 **Get updates**