



Sentinel for HPE NonStop

World-class system monitoring for mission-critical operations

Data sheet

What is Sentinel?

Sentinel for HPE NonStop is a dynamic operations and service management software for [HPE NonStop systems](#).

It is built on a highly advanced architecture that is object-based and provides monitoring of systems, networks, hardware, subsystems, processes, files, event management service (EMS) log messages, and even third-party applications. Sentinel's unique design lies in its ability to pull together a massive amount of active monitoring into a single set of screen objects, providing the means to diagnose a problem in more detail and real-time through context-sensitive drill-down screens.

Immediate visibility of business process vulnerabilities

Analytics is central to the high performance of enterprise organizations as they invest in [digital transformation](#) and respond to tough market conditions. Sentinel monitors all HPE NonStop nodes from a single interface, providing business and operations with a particular view of the enterprise, incorporating the status of applications, infrastructure, subsystems, and associated system and application log messages.

Event management on your HPE NonStop can be challenging. Sentinel offers an unrivalled solution for absorbing non-tokenized messages submitted by applications, message queue (MQ), and open system services (OSS) to EMS and parsing them into unique tokenized messages for improved monitoring, management, escalation, and resolution.

Tasks can be configured to automatically resolve problems when they arise, or they can be left to the user's discretion.

In-built security denies or allows access to these tasks so only authorized personnel can configure or run tasks.

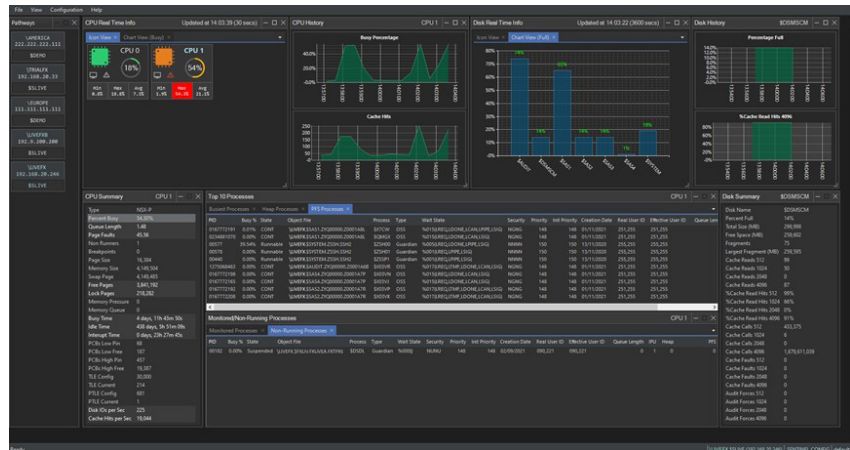


Figure 1. Advanced monitoring of the entire HPE NonStop environment

A single solution for HPE NonStop management needs

Sentinel retrieves performance and capacity statistics from HPE NonStop subsystems and processes, and analyzes them against pre-configured thresholds. If the thresholds are exceeded, then a log message is submitted to EMS. If a value is below its threshold, then a different message is submitted. This pair of “up” and “vulnerable” messages can be used to animate a status monitor icon and force the icon to turn orange (vulnerable) or gray (up).

Key benefits

- Corrects faults automatically, using the context of the original log message
- Escalates alerts through a local graphical console or email
- Enables legacy applications if they are required to participate in a centralized strategy

Capitalize on EMS subsystem for real-time results

The EMS subsystem is installed on every HPE NonStop system. It begins when your machine is loaded and it can be tuned but cannot be shutdown. The subsystem provides the native logging environment for your HPE NonStop system. All the hardware, operating system, and utility subsystems write their logging information to EMS. The log messages cover not only error conditions such as a hardware failure, but they also cover basic information such as a tape being loaded. Sentinel uses this information to provide real-time information on visually pleasing, easy-to-follow constructed dashboards.

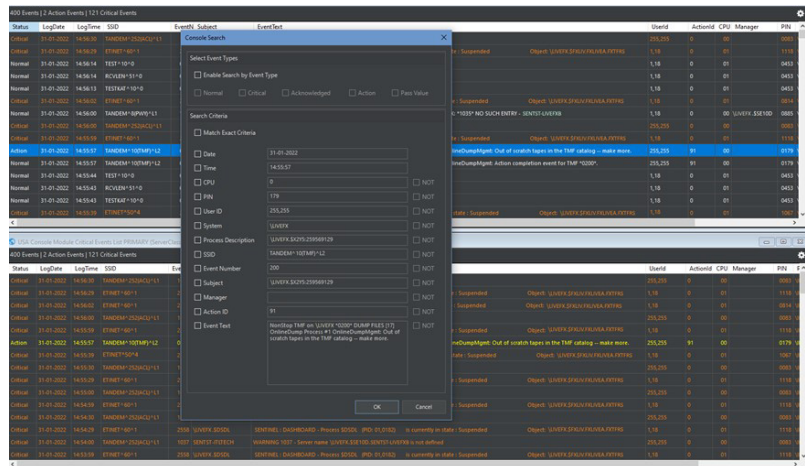


Figure 2. EMS log messages are highlighted and displayed in order of priority



Automated escalation, problem resolution at the source

TaskMaster is the automation engine of Sentinel.

Sentinel can parse messages submitted to EMS that describe error conditions that can be corrected programmatically and without manual intervention. This information can be forwarded to TaskMaster, which oversees the implementation of the appropriate automated corrective action.

TaskMaster can be used to start and close down applications based on a specific message being received from an external gateway, so this functionality can deal with more than just corrective action. TaskMaster can be used to run a single or multiple Guardian programs including standard utilities such as disk space analysis program (DSAP), application programs, or TACL scripts. Programs can be run in parallel or serially to cater for different needs.

See an immediate improvement in your HPE NonStop estate with Sentinel

Less maintenance

Sentinel enables users to perform some of the GUI-based maintenance tasks from the command line or a batch scheduler. These tasks include table archiving, filter compilation, and “warm booting” the software.

Improved reporting

Sentinel is equipped with a variety of reporting tools to help list out your database tables and ease maintenance.

Migration and disaster recovery

Any reaction rules that are built into one database can be exported to an intermediate transit file, which can then be copied to another HPE NonStop node and imported into another Sentinel database. In this way, the standard development, test, and release cycles can be followed.

System requirements

HPE NonStop system running the HPE NonStop Operating System L19.03 or later, or J06.23 Release Version Update (RVU).

Software requirements

For HPE NonStop systems running the HPE NonStop L-series operating system

BE177AC	HPE NonStop TNS/X COBOL RunTime Library
BE221AC	HPE NonStop TNS COBOL85 RunTime Library
BE352AC	HPE NonStop TS/MP (ACS)

For HPE NonStop systems running the HPE NonStop J-series operating system

QSB02	HPE NonStop COBOL RunTime for TNS/E
QSB81	HPE NonStop COBOL RunTime for TNS
QSR78	HPE NonStop Pathway with TS/MP (ACS)



Ordering information

HPE NonStop servers running the HPE NonStop L-series operating system

BE093AC	Sentinel for HPE NonStop, DVD
---------	-------------------------------

BE093ACE	Sentinel for HPE NonStop, E-Media
----------	-----------------------------------

HPE NonStop servers running the HPE NonStop J-series operating system

QSENTINEL	Sentinel for HPE NonStop, DVD
-----------	-------------------------------

Training and education

Gain the skills you need with training and certification from Hewlett Packard Enterprise. With [HPE NonStop training](#), you accelerate your technology transition, improve operational performance, and get an excellent return on your HPE investment.

Our training is available when and where you need it, through flexible delivery options and a global training capability. More trainings and webinars can be found at nonstop-academy.com.

HPE Financial Services

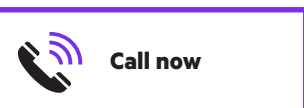
HPE Financial Services: Creating investment capacity to accelerate digital transformation

HPE Financial Services helps organizations create the investment capacity they need for digital transformation, in an innovative and sustainable way. HPEFS partners with customers to develop a playbook for their entire IT asset portfolio (from edge to cloud to end user), one that is unique to their aspirations and size. Our financial and asset management solutions are anchored by best-in-class tech upcycling services. For more information, visit: hpe.com/us/en/services/financial-services.html.

HPE Pointnext Services

Leverage one of the most comprehensive support solutions tailored to meet your specific data center support requirement. HPE Pointnext Services offers a wide choice of proactive and reactive service levels covering requirements ranging from basic to complex business-critical environments. For more information, see: [HPE Contractual Support Portfolio for HPE NonStop servers](#).

Make the right purchase decision.
Contact our presales specialists.



Learn more at
hpe.com/info/nonstop

Visit [HPE GreenLake](#)

 [Get updates](#)