



BackBox[®] E4.11 User Interface Installation

Published: October 2022

Edition: H06.06, J06.06 or L06.06 RVUs, or subsequent H-series, J-series or L-series RVUs



Legal Notice

© Copyright 2022 ETI-NET Inc. All rights reserved.

Confidential computer software. Valid license from ETI-NET Inc. required for possession, use or copying.

The information contained herein is subject to change without notice. The only warranties for ETI-NET products and services are set forth in the express warranty statements accompanying such products and services. Nothing herein should be construed as constituting an additional warranty. ETI-NET shall not be liable for technical or editorial errors or omissions contained herein.

BackBox is registered trademarks of ETI-NET Inc.

StoreOnce is a registered trademark of Hewlett Packard Development, L.P.

Microsoft, Windows, and Windows NT are U.S. registered trademarks of Microsoft Corporation.

Tivoli Storage Manager (TSM) is a registered trademark of IBM Corporation.

QTOS is a registered trademark of Quality Software Associates Inc.

All other brand or product names, trademarks or registered trademarks are acknowledged as the property of their respective owners.

This document, as well as the software described in it, is furnished under a License Agreement or Non-Disclosure Agreement. The software may be used or copied only in accordance with the terms of said Agreement. Use of this manual constitutes acceptance of the terms of the Agreement. No part of this manual may be reproduced, stored in a retrieval system, or transmitted in any form or by any means, electronic or mechanical, including photocopying, recording, and translation to another programming language, for any purpose without the written permission of ETI-NET Inc.

TABLE OF CONTENTS

- Table of Contents** **3**
- Introduction** **4**
- BackPak Distribution Package** **5**
 - Installation Requirements 5
- INSTALL BACKPAK UI CLIENT** **6**
- UI Preferences** **10**
 - Session timeout configuration 10
 - Internet Options 10
 - Pop-up Windows settings 11
 - Scripting settings 12
- Un-Install BackPak UI Client** **13**

INTRODUCTION

This guide documents the installation of the BackPak User Interface client on an operator workstation or on a BackPak VTC server.

The main documentation reference is *BackBox User Manual*.

Product error messages are documented in the *BackPak Messages Manual and Troubleshooting*.

The UI Client application can be installed on various Windows operating systems. For details about the product requirements, refer to the introduction in the *BackBox User Manual* or to the dedicated booklet BackPak products requirements.

BACKPAK DISTRIBUTION PACKAGE

The BackPak distribution package contains the following files:

- the UI-*vv.vv.vvvv* directory:
 - BackPakClientSetup.msi
 - Setup.exe
- the documentation directory:
 - *BackBox Installation Guide* for an initial installation.
 - *BackBox Upgrade Procedure* for an update from a previous version.

Installation Requirements

A user account with full local administrator rights is required for the installation process. If the user running the installation is not the same as the one who will use the UI, make sure to select **Everyone** option in the **Select** folder dialog box.

For normal application operation, JavaScript enabled and Popup Window enabled should be set as described in [Internet Options](#).

INSTALL BACKPAK UI CLIENT

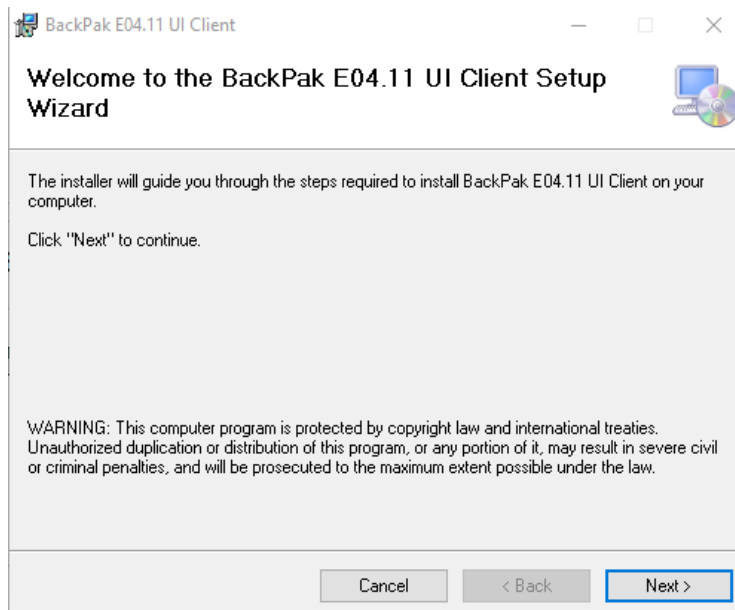
This section documents how to install the BackPak UI Client on a Windows workstation or a VTC server.

To install the BackPakUI Client:

1. Open the BackPak distribution set and navigate to the UI-v.vv.vvvvv directory.
2. Run Setup.exe.


If a Windows component is missing or not up-to-date, it needs to be downloaded from the Microsoft site. If there is no internet connection, the user has to update or install the missing component using the appropriate procedure.

1. Run the Setup.exe to launch the UI Client Setup Wizard and follow the steps required to install the application. Click **Next**.

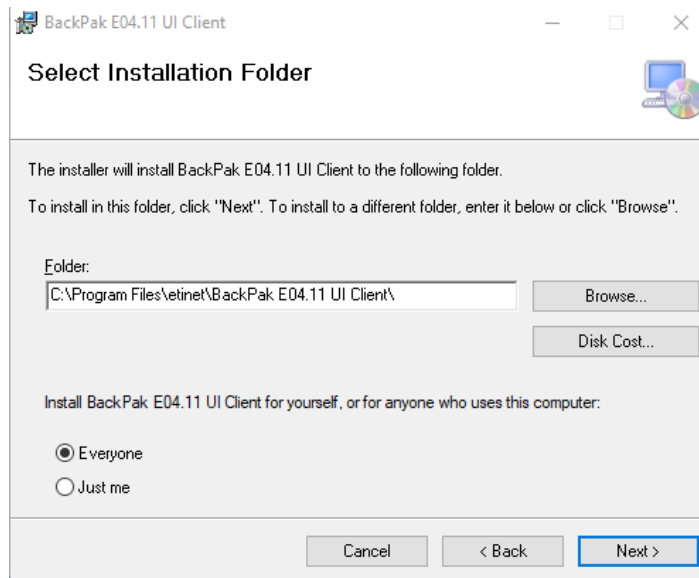


2. Select the installation folder. Use the default folder or browse to install the UI Client to a different folder.

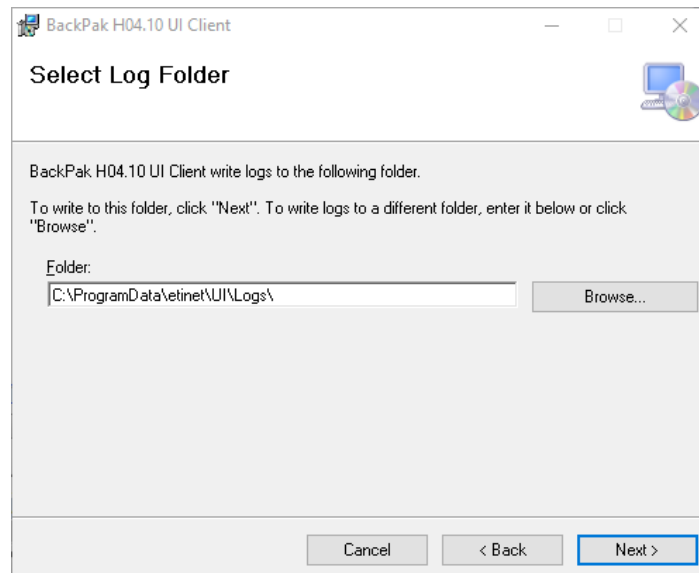
If the access to the UI Client has to be restricted to the current user, select **Just me**.

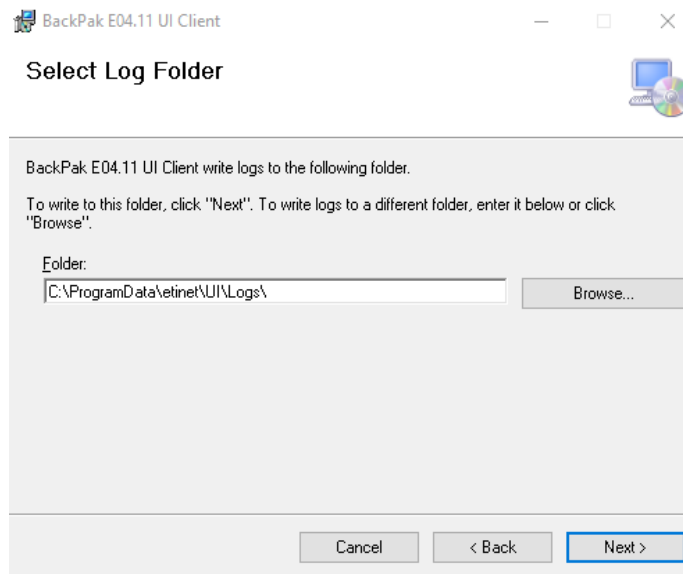
	It is highly recommended to use no restriction. Choose Everyone to install the UI Client for anyone who may use this computer, especially when installing on a VTC.
---	--

Click **Next**.

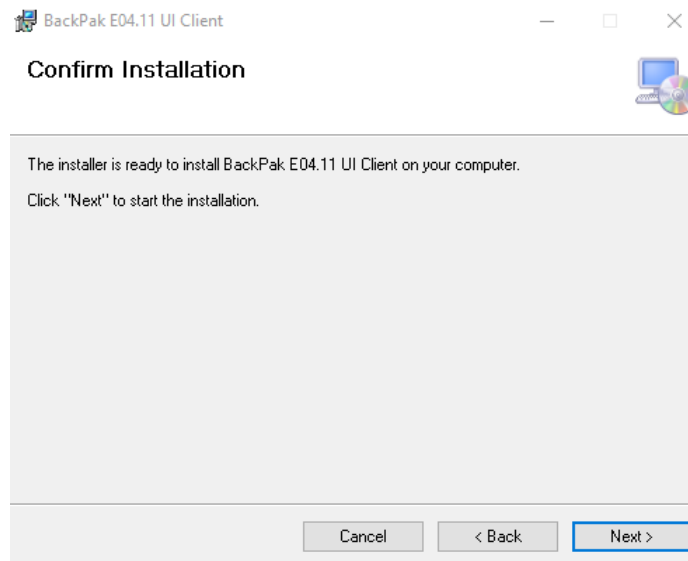


3. Browse the Log Folder or click **Next** to use the default folder.

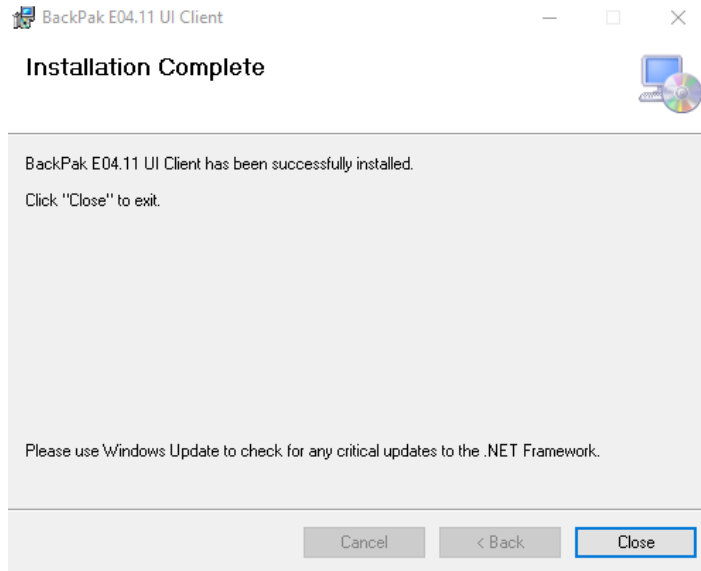




4. Confirm installation by clicking **Next**.

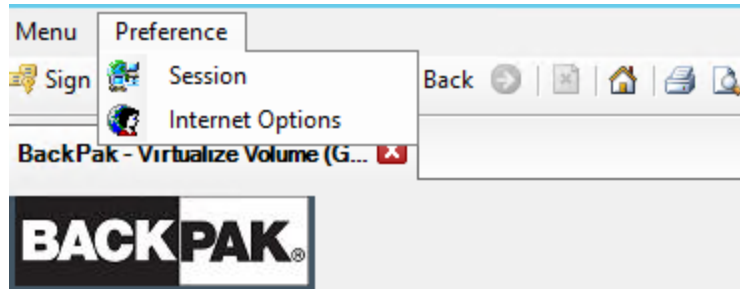


5. Once the installation is complete, you are prompted with the message. Click **Close** to exit the Wizard and to complete de installation.



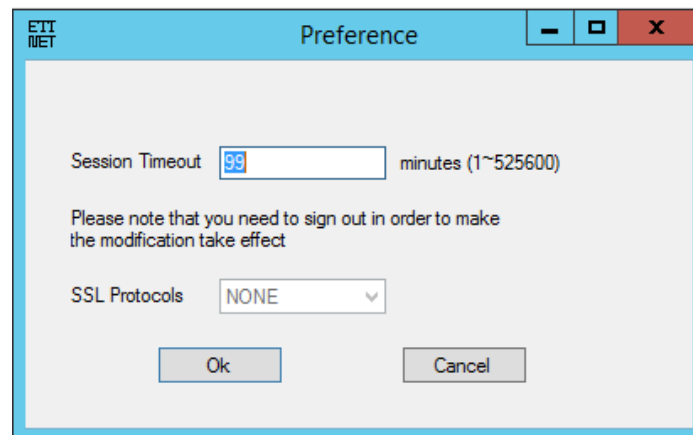
UI PREFERENCES

UI client preferences can be set by the menu **Preference**.



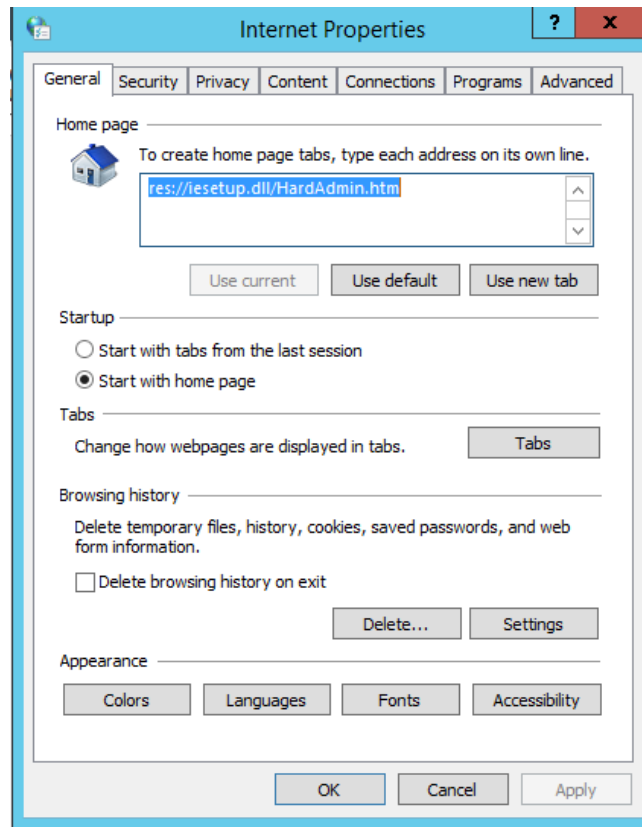
Session timeout configuration

User Interface sessions automatically time out after 99 minutes of inactivity. To set a different timeout, select **Preference > Session**. The Session Timeout field allows values between 1-525600 (in minutes).



Internet Options

To set up or change the Internet options, use the standard IE Internet Options page: **Preference > Internet Options**.



The BackPak UI requires usage of Scripting applet and Pop-up windows. Those options need to be set for each user account that will run the BackPak UI.

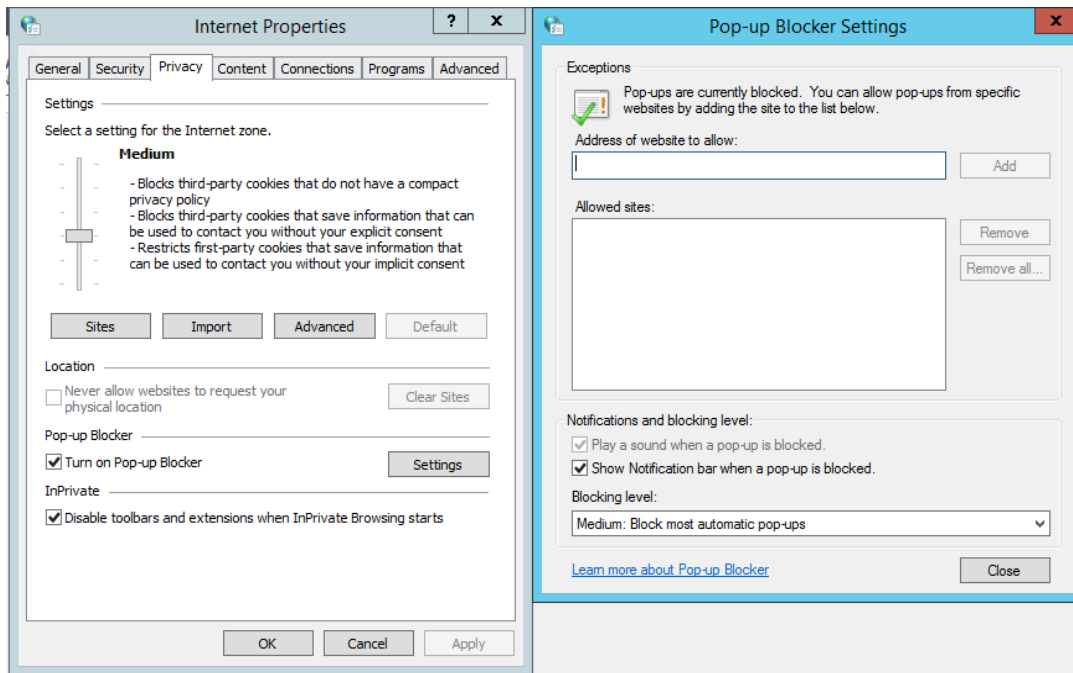
	In restricted environments, the user operating the BackPak UI may not be able to change IE Internet Options. In such a case, ask the local administrator to apply the changes to the user account.
--	--

Pop-up Windows settings

Select the **Privacy** tab and verify if the **Pop-up Blocker** is activated. If the case, you need to add **localhost** address to the Allowed sites.

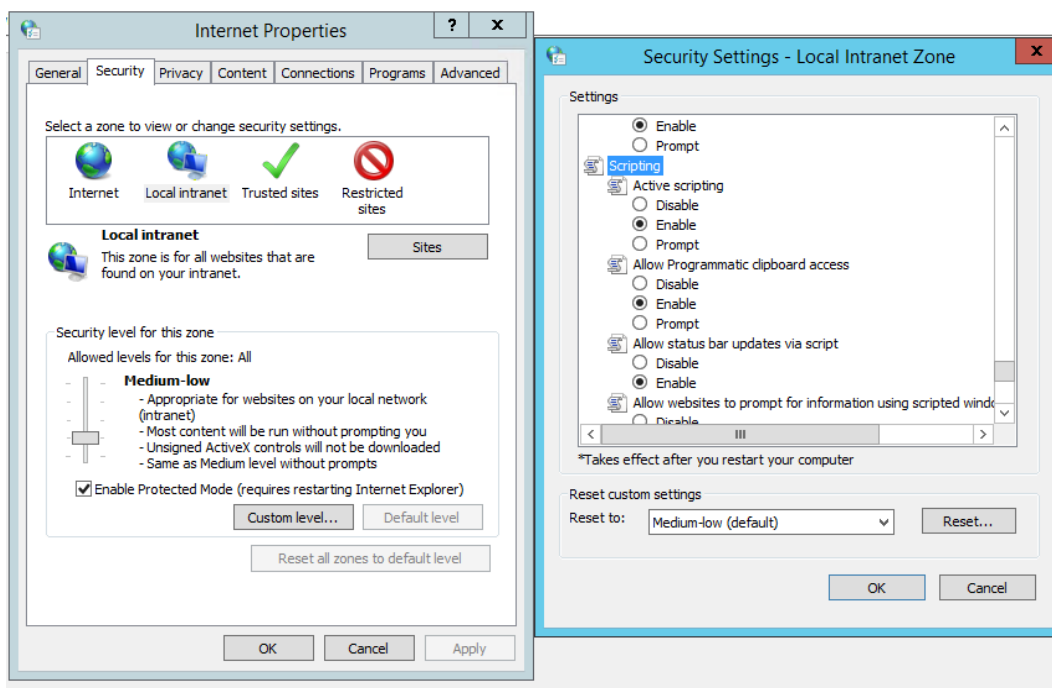
	In restricted environments, the user operating the BackPak UI may not be able to change IE Internet Options. In such a case, ask the local administrator to apply the changes to the user account.
--	--

Note: If other Pop-up windows blockers are enabled on IE, they would need to be configured as well.



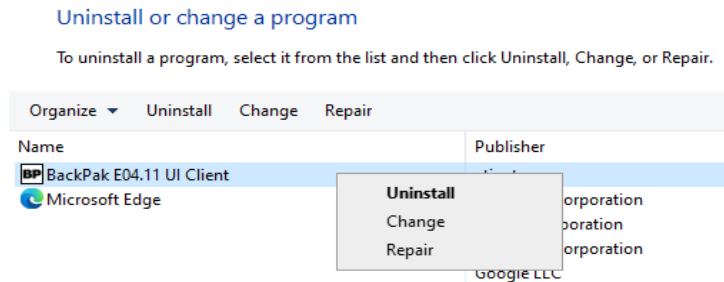
Scripting settings

In the **Security** tab, select the Local intranet zone and click on the **Custom level...** In the **Security settings** dialog box scroll down up to the **Scripting** section and activate all 6 options: Activate Scripting, Allow Programmatic clipboard access, Allow status bar updates via script, Allow websites to prompt for information using scripted windows, Enable XSS filter, Scripting for Java applets.

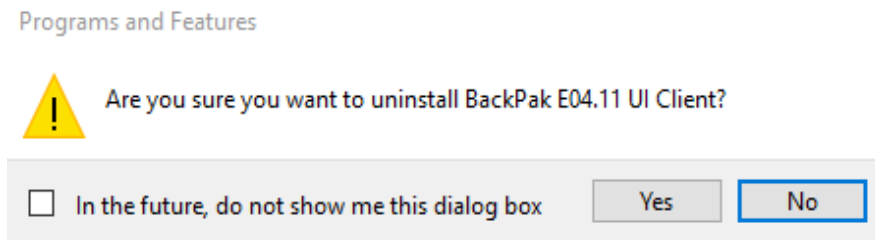


UN-INSTALL BACKPAK UI CLIENT

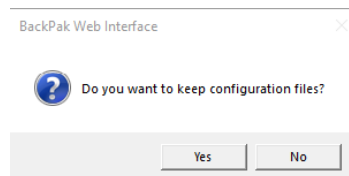
If you need to uninstall, follow the install procedure: **Control Panel > Add or Remove Programs**. Search for “BackPak UI Client” followed by the version type and number and right-click on it to uninstall, change, or repair.



For Uninstall, a pop-up window will ask to confirm.



While uninstalling the interface, a pop-up will ask if you want to keep the configuration files. Choose accordingly.



The application has been removed and uninstalled.